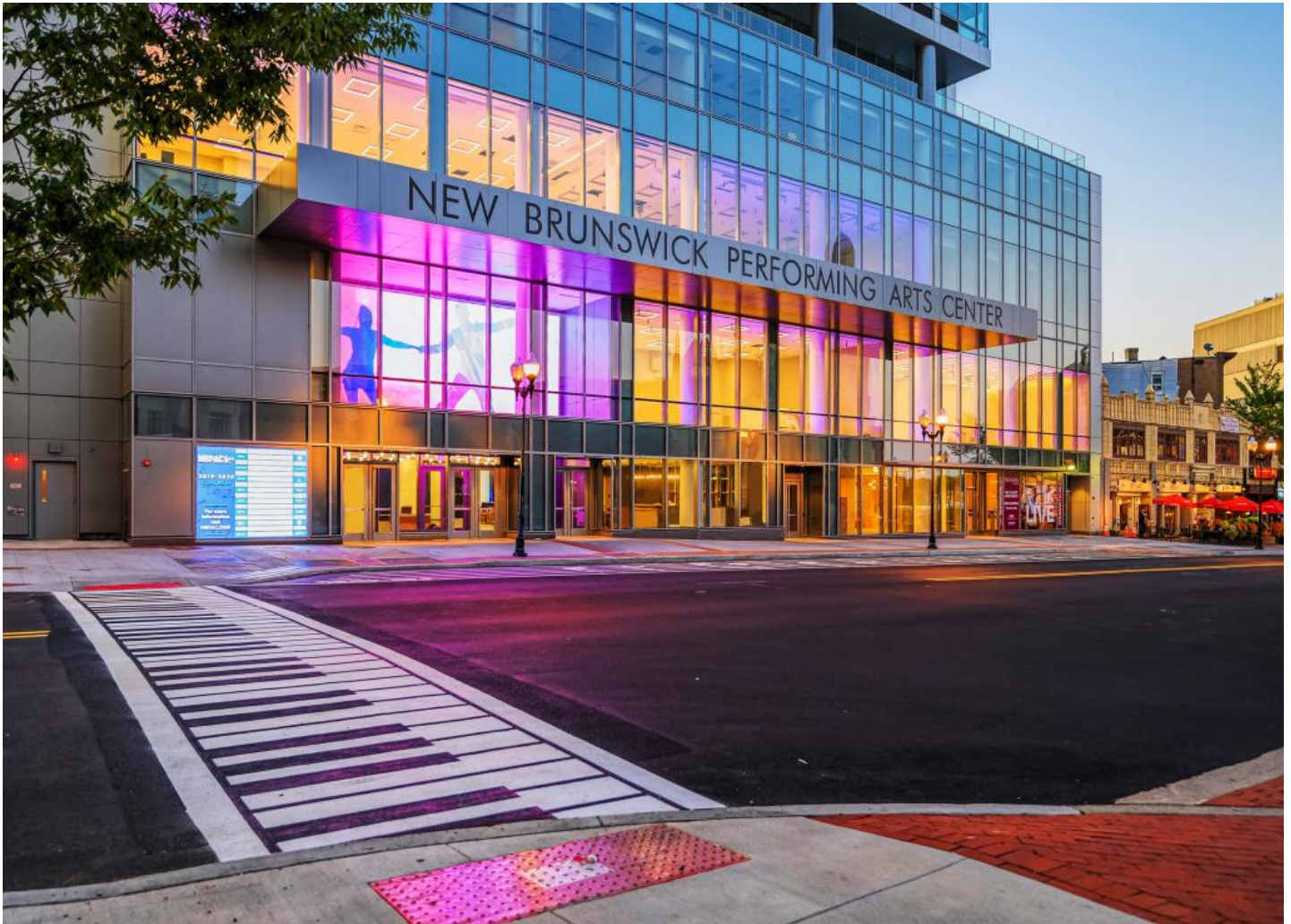


NBPAC

NEW
BRUNSWICK
PERFORMING
ARTS
CENTER



proud home of



American Repertory Ballet



THEATRE COMPANY



MASON GROSS

TECHNICAL SPECIFICATIONS

REV.2

TABLE OF CONTENTS

Table of Contents	2
Elizabeth Ross Johnson Theater	3
Elizabeth Ross Johnson Theater General Information & Seating Capacity	4
Elizabeth Ross Johnson Theater Plan View	5
Elizabeth Ross Johnson Stage Dimensions	8
Elizabeth Ross Johnson Line Set Schedule	9
Elizabeth Ross Johnson Soft Goods Inventory	10
Elizabeth Ross Johnson Lighting Information	11
Elizabeth Ross Johnson Audio Information	12
Elizabeth Ross Johnson Backstage Information	14
Elizabeth Ross Johnson Green Room and Dressing Rooms	14
Elizabeth Ross Johnson Loading Dock Information	15
Arthur Laurents Theater.....	16
Arthur Laurents Theater General Information & Seating Capacity	17
Arthur Laurents Theater Plan View	18
Arthur Laurents Stage Dimensions.....	20
Arthur Laurents Line Set Schedule.....	21
Arthur Laurents Soft Goods Inventory	22
Arthur Laurents Lighting Information.....	23
Arthur Laurents Audio Information.....	24
Arthur Laurents Projector Information.....	26
Arthur Laurents Backstage Information.....	27
Arthur Laurents Green Room and Dressing Rooms	27
Arthur Laurents Loading Dock Information	28
Rehearsal Rooms.....	29
Building Layout	31
Contact Information	33

ELIZABETH ROSS JOHNSON THEATER



ELIZABETH ROSS JOHNSON - GENERAL THEATER INFORMATION

The Elizabeth Ross Johnson Theater (ERJ) is a proscenium stage fully furnished with soft goods, 45 single purchase counterweight line sets, trap room, control booth, follow spot booth, orchestra pit, catwalks, box booms, balcony rail, full theatrical lighting system and an immersive audio system. The stage floor is constructed of two layers of ¾” plywood, installed on 2x4 sleepers on resilient isolators.

Proscenium Opening.....48’ W X 26’ H

Stage Floor*81’ W X 45’ D

Fly Loft Height.....63’ – 6”

Trap Floor Modules*4’ X 4’

*For exact stage and trap dimensions see Stage Dimensions pg. 8

Seating Capacity

Total Capacity 444

Orchestra 344*
(Of which 7 are removable for wheelchair accessibility)

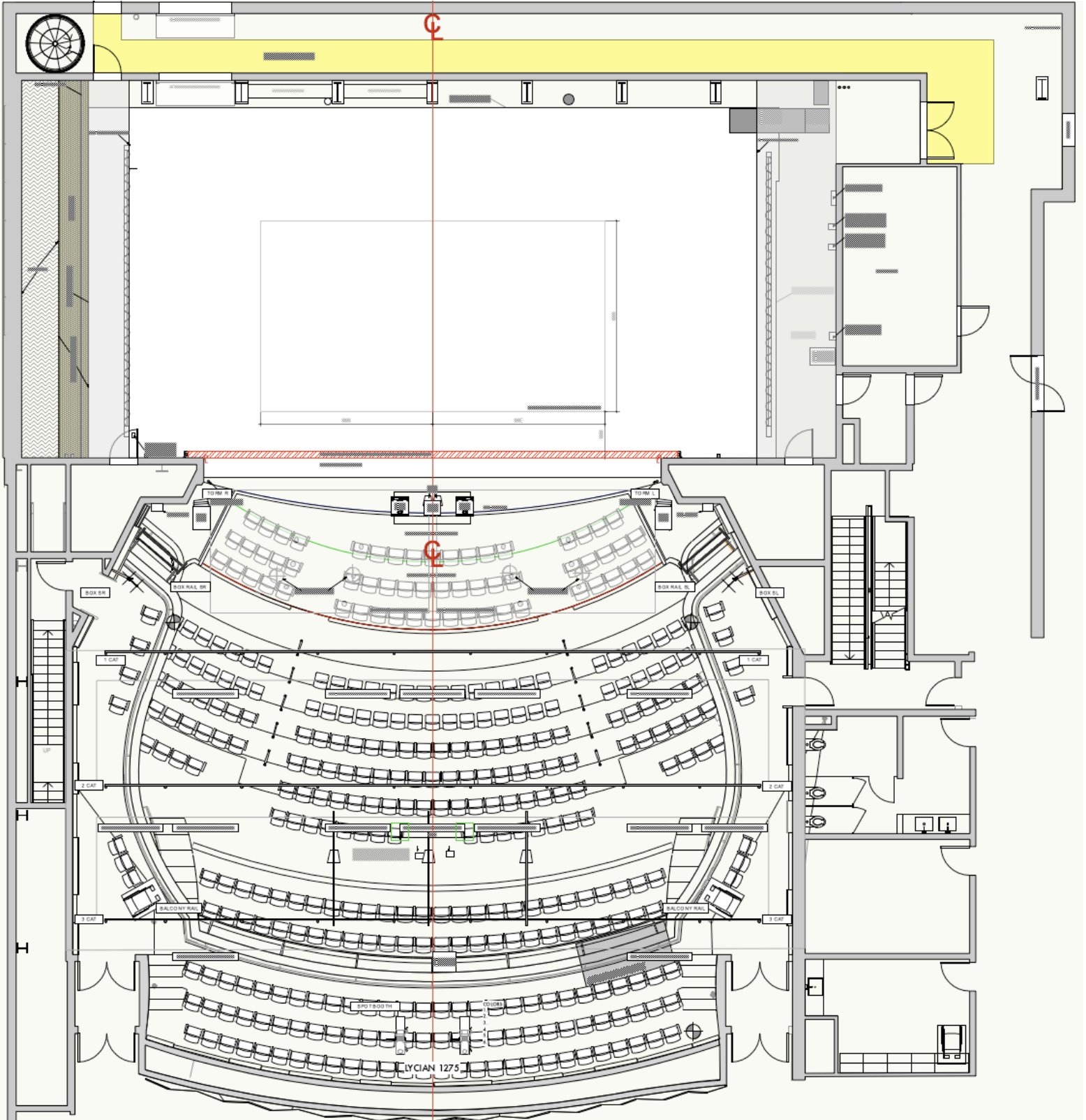
Balcony 100
(Of which 2 are removable for wheelchair accessibility)

*Orchestra has 58 seats in what could be used as the “Orchestra Pit”.

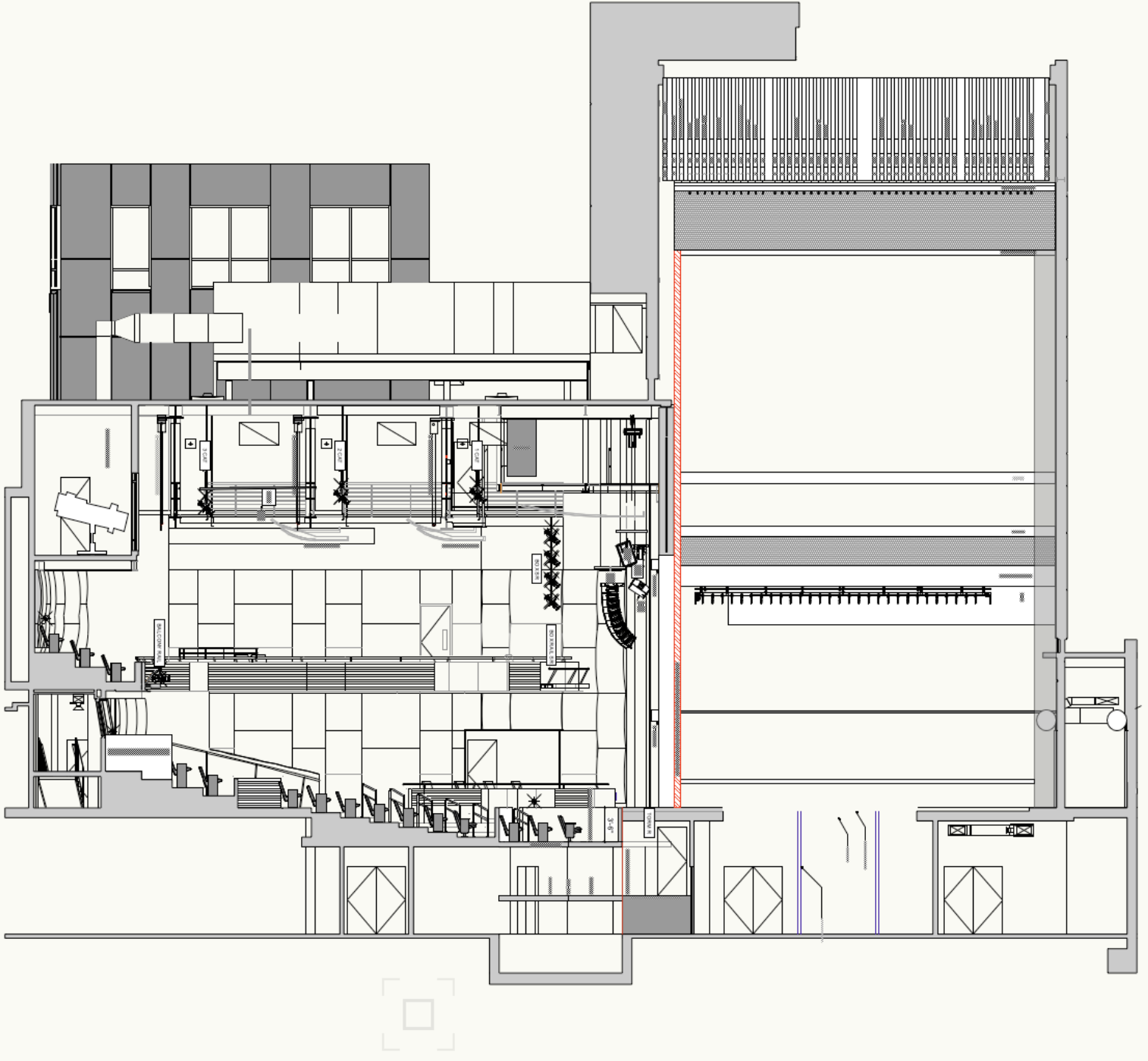
**When the Orchestra Pit is in use there are:

- 17 unusable Orchestra seats when the US ½ of the Orchestra Pit is used
- 58 unusable Orchestra seats when the entire Orchestra Pit is used

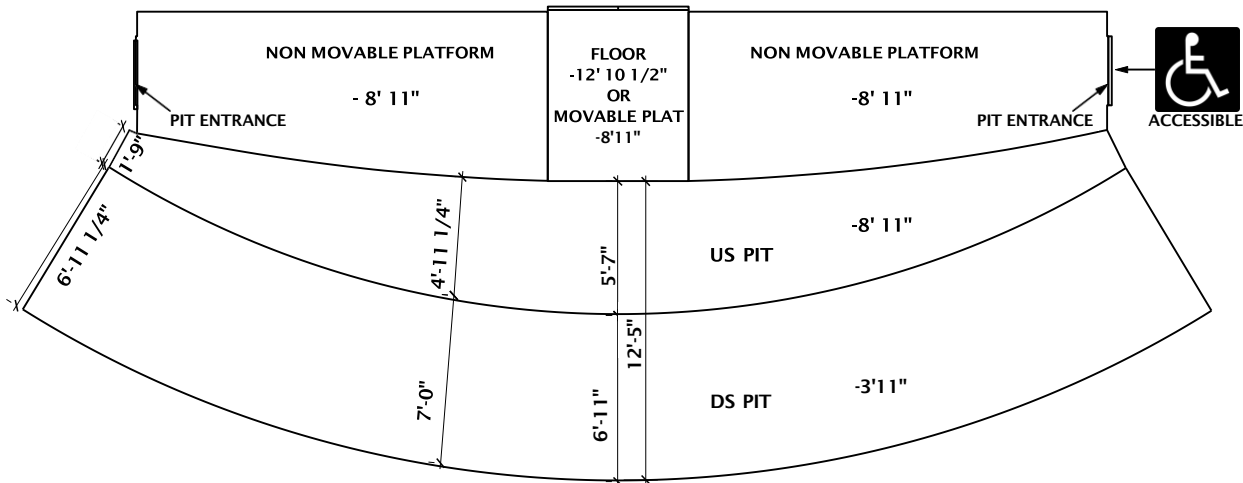
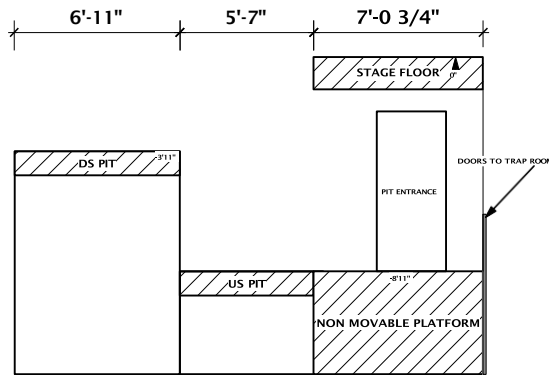
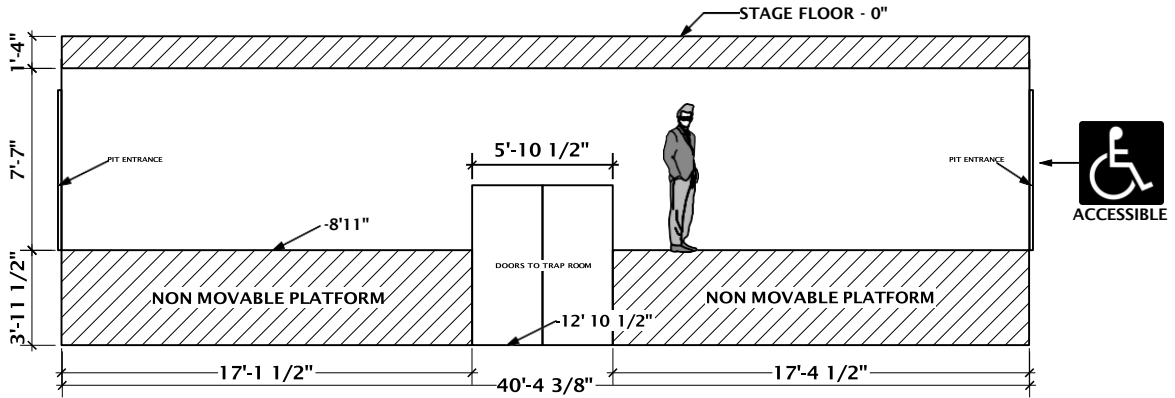
ELIZABETH ROSS JOHNSON – PLAN VIEW



ELIZABETH ROSS JOHNSON – SECTION VIEW



ELIZABETH ROSS JOHNSON THEATER – ORCHESTRA PIT



1 **ERJ PIT**
Scale: 1/8" = 1'-0"

ELIZABETH ROSS JOHNSON – STAGE DIMENSIONS

Proscenium	
Width	48'-00"
Height	26'-00"
Stage	
Height above audience level	3'-6"
Depth from apron to back wall	45'-00"
Plaster line to back wall	39'-9"
Apron edge to plaster line	5'-3"
Plaster line to scrim	32'-0"
Leg to Leg	40'-0"
CL to SR wall	39'-00"
CL to SL wall	42'-0"
Stage Batten Length	62'-0"
Stage Batten Rigging Spacing	10'-0"
Wings	
SR proscenium edge to SR side fly rail	15'-00"
SL proscenium edge to SL side wall	18'-00"
Total stage width, wing to wing <i>Excludes counterweight pit</i>	81'-00"
Orchestra Pit	
<i>Equipped with two fixed-speed hydraulic orchestra lifts; functional at stage, house, and pit levels</i>	
Stage level (stage position)	0'-00"
Below stage level (house position)	3'-6"
Below stage level (pit position)	8'-11"
Usable space for orchestra	768 sq. ft
Seating capacity	58 seats
Auditorium	
Apron to booth	52'-00"
Apron to balcony rail	47'-00"
Trap Room	
<i>Stage Trap Dimension (4'x4' module)</i>	
Width	36'-00"
Depth	20'-00"
Height	11'-8"

ELIZABETH ROSS JOHNSON – LINE SET SCHEDULE

LS #	Goods	WEIGHT (lbs)	BRICKS	TRIM	Distance (ft.)	Spacing
-	Plaster Line	-	-	-	0' – 0"	0'
MOTOR	Fire Curtain	-	-	-	0' – 4"	4"
LS 1	Valance	154	7	30' 11"	1' – 8"	9"
LS 2	Main + Track	825	37 lg. 1 sm.		2' – 5"	9"
LS 3	Legs	88	4	30' 0"	3' – 2"	9"
LS 4					3' – 11"	9"
LS 5	#1 Electric	330	15	25' 6"	4' – 8"	9"
LS 6	Projector (Optional - Cyc)	44	2		5' – 5"	9"
LS 7	Projector (Optional - Cyc)	44	2		6' – 2"	9"
LS 8	Projector Screen	176	8		6' – 11"	9"
LS 9	#1 Border	88	4	32'	7' – 8"	9"
LS 10	#1 Legs	88	4	30' 0"	8' – 5"	9"
LS 11					9' – 2"	9"
LS 12					10' – 5"	9"
LS 13					11' – 2"	9"
LS 14					11' – 11"	9"
LS 15	#2 Electric	616	28	28' 3"	12' – 8"	9"
LS 16					13' – 5"	9"
LS 17					14' – 2"	9"
LS 18	#2 Border	88	4	32'	14' – 11"	9"
LS 19	#2 Legs	88	4	30' 0"	15' – 8"	9"
LS 20					16' – 5"	9"
LS 21					17' – 2"	9"
LS 22					17' – 11"	9"
LS 23	Blackout	176	8		18' – 8"	9"
LS 24					20' – 8"	9"
LS 25	#3 Electric	506	23	28' 3"	21' – 5"	9"
LS 26					22' – 2"	9"
LS 27					22' – 11"	9"
LS 28	#3 Border	88	4	32'	23' – 8"	9"
LS 29	#3 Legs	88	4	30' 0"	24' – 5"	9"
LS 30	Projector	44	2		25' – 2"	9"
LS 31	[Blocked when projector hung]				25' – 11"	9"
LS 32	Projector	44	2		26' – 8"	9"
LS 33					27' – 5"	9"
LS 34	#4 Electric	682	31	26' 3"	28' – 2"	9"
LS 35					28' – 11"	9"
LS 36					30' – 2"	9"
LS 37	#4 Border	88	4	31' 4"	30' – 11"	9"
LS 38	#4 Legs	88	4	30' 0"	31' – 8"	9"
LS 39	Scrim - Black	88	4	31' 0"	32' – 5"	9"
LS 40	Cyc	154	7	31' 0"	33' – 2"	9"
LS 41					33' – 11"	9"
LS 42					34' – 8"	9"
LS 43	#5 Electric	286	13	25' 6"	35' – 5"	9"
LS 44					36' – 2"	9"
LS 45	Bounce	242	11	31' 0"	36' – 10"	8"

*Line Set Weight Limit: **1985 lbs.** / *Weights listed w/o pipe weight / *All Line Sets are 62'-0" Total length - 1 ½" Sched. 40

ELIZABETH ROSS JOHNSON – SOFT GOODS INVENTORY

Good	Quantity	Height	Width	Color	Fabric	Fullness	OZ / IFR
Main Valance	1	10'-0"	62'-0"	Ink Blue	Charisma	75%	25 IFR
Main Drape	1 (2pc)	31'-0"	31'-0"	Ink Blue	Charisma	75%	25 IFR
Legs	12	30'-0"	13'-3"	Black	Encore	NONE	22 IFR
Borders	5	10'-0"	62'-0"	Black	Encore	NONE	22 IFR
Scrim	1	31'-0"	62'-0"	Black	Sharkstooth	NONE	IFR
Scrim	1	31'-0"	62'-0"	White	Sharkstooth	NONE	IFR
Cyc	1	31'-0"	62'-0"	Natural	Muslin	NONE	IFR
Bounce	1	31'-0"	62'-0"	Twin White	Vinyl	NONE	
Tabs	8	21'-4"	8'-0"	Black	Encore	NONE	22 IFR
Black Out Curtain*	1 (7pc)	26'-0"	62'-0"	Black	Unknown	NONE	IFR

*Black Out Curtain is made up of a series of 10'-0" wide Legs to create a full stage black out.

NOTE: Stage Battens are 62'-0" total length with rigging points at center and every 10'-0" SR / SL

ELIZABETH ROSS JOHNSON – LIGHTING INFORMATION

Lighting Control Console

- ETC Eos Titanium (EOS Ti) 24k
 - 24,576 outputs with no co-processing
 - ETCNet3™ (ACN- based), ETCNet2™, Artnet and Avab® UPD protocol output
 - Multiple Midi and SMPTE Inputs
 - OSC and UDP Transmit and Receive

Dimming & Control

- ETC CEM3 Sensor Power Control System
 - 576 Dimmers – ETC ThruPower 2.4kw Dimmer Modules
 - 24 – 20A 120V Controlled Breakers (Edison)
 - 24 – 20A 208 Controlled Breakers (L6-20)
- Dimmers, controlled breakers, network data infrastructure, and architectural lighting installed throughout the space.
- Work lighting system permanently installed for set up and cleaning.

Lighting Inventory (ERJ)

Fixture / Accessory	Manufacturer	Quantity
10° Source-4 Ellipsoidal 575w*	ETC	8
14° Source-4 Ellipsoidal 575w*	ETC	20
19° Source-4 Ellipsoidal 575w*	ETC	60
26° Source-4 Ellipsoidal 575w*	ETC	40
36° Source-4 Ellipsoidal 575w*	ETC	30
50° Source-4 Ellipsoidal 575w*	ETC	12
Source-4 Par w/ complete lens kit 575w*	ETC	10
Desire D60XTI LED Par Fixture w/ ML & VNR Lenses	ETC	32
ColorSource Cyc	ETC	18
SolaFrame 1000 High CRI	ETC / High End	10
SuperStar 1.5 Model 1275 Arc 1500w Follow Spot	Lycian	2
Sidearm 18” Single Tee	Altman	46
Top Hats 6.25” Full / Flocked	City Theatrical	30
4-Leaf Barndoor for D60XTI units	ETC	20
Drop in Iris	ETC	10
Pattern Holders	ETC	30
Donut for 6.25” Units	City Theatrical	30
21’-0” x 1 ½” dia. (nom.) Steel pipe Schedule 40		8
10’-0” x 1 ½” dia. (nom.) Steel pipe Schedule 40		8
50lb Boom Base	Altman	8
Heat Shield Border 1’-6”H x 10’-0”W	Zetex	12

* Units can be lamped up to 750w if lamps are provided

* All units have color frames

ELIZABETH ROSS JOHNSON – AUDIO INFORMATION

Audio Mixing Console

- Yamaha CL5
 - Input Channels: 72 mono: 8 stereo
 - Output: 24 mixes, 8 matrix, stereo left/right, and mono
 - Fader configuration: 16-fader left section, 8-fader centralogic section, 8-fader right section, 2-fader master section.

- Yamaha Rio3224-D, Digital Mixing Console stage box, 32-in x 16-out + AES Out in Control Room rack. Routes analog audio lines from theatre connection panels to console via Dante network.

Audio Inventory (ERJ)

SOUND PLAYBACK	Mac Mini	1	INSTALLED: DVS, Nuendo Live, QLab 4 (Audio)
	Tascam SS-CDR250N	1	Solid State/CD Recorder/Player
	Tascam IF-DA2	1	Dante Card for Tascam SS-CDR250N
POWERED SPEAKERS	Meyer Sound LINA	20	Right and Left Array, 10 on each array Split 6 Bottom, 4 Top
	Meyer Sound 900-LFC	2	Subwoofers. Flown on Center Cluster Frame
	Meyer Sound UPQ-1P	1	Center Cluster TOP
	Meyer Sound UPJ-1P	2	Center Cluster BOTTOM
	Meyer Sound UP-4XP	4	Front Fills
	Meyer Sound HMS-5	4	Side Box Fills
	Meyer Sound UPM-1P	6	2 Permanently Hung over Doorways on Unistrut. Referred to as Backstage Position; 4 on Booms for Foldback
	Meyer Sound UPJ-1P	3	Permanently Hung for Balcony Fills
	Meyer Sound UPM-1P	4	PORTABLE.
DIGITAL SIGNAL PROCESSING	Meyer Sound Galileo Galaxy 816	2	Installed in Booth Rack
	Meyer Sound MPS-488	1	Power Supply for HMS-5 and UP-4XP
	SoundWeb BSS London Blu-806DA	1	DSP - Mains MUST go through this for fire safety. NO EXCEPTIONS
	SoundWeb BSS London Blu-BOB1	1	Part of DSP
WIRELESS MICROPHONE SYSTEM	Shure ULXD4Q	2	4 channel digital wireless microphone receiver. Dante capability
	Shure ULXD1	8	wireless bodypack transmitter
	Countryman E6	8	Omnidirectional Earloop - BEIGE
	Countryman B3	8	Omnidirectional Lavalier - BEIGE
	Shure ULXD2/B87a	4	handheld wireless microphone transmitter
	Shure UA874	2	active directional antenna

CLEARCOM INTERCOM SYSTEM	ClearCom HelixNet HMS-4X	1	4 Channel Base Station, Permanently Mounted in ERJ Rack in the booth.
	ClearCom HelixNet HRM-4X	1	4 Channel Remote Station, Permanently Mounted in ERJ SM Calling Box
	ClearCom HelixNet HXII-BP-X4	16	digital partyline intercom beltpack
	ClearCom CC-40	16	digital partyline intercom headset
	ClearCom HS-6	4	digital partyline intercom handset
	ClearCom FreeSpeak II-Base-5	1	4 channel wireless com base station. UNLOCKED FOR 25 WIRELESS BELTPACKS
	ClearCom FreeSpeakII Beltpack	5	wireless intercom beltpack; 1.9 GHz
	ClearCom FSII-TVCR-19-US	5	wireless intercom antenna transceiver; HUNG AROUND BUILDING TO ENSURE MAXIMUM SIGNAL COVERAGE; 1.9 GHz
	ClearCom FSII-SPL	2	wireless intercom antenna splitter. 1.9 GHz
	ClearCom AC-60	1	5 unit charging cradle for FreeSpeak beltpacks
PRODUCTION VIDEO SYSTEMS & PROJECTION EQUIPMENT	Panasonic AW-HE130	1	PTZ Camera. Stage Shot. DO NOT USE FOR VIDEO EFFECTS
	Marshall CV365-CGB	1	Infrared Stage Shot Camera. 3MP GenLock Lens
	Tendelux BI18 Illuminator	1	18W; 90 degree beam angle; 12V DC; 850nm wavelength
	Draper StageScreen CH1200V CineFlex	1	Rear Projection Screen. 180x288; 0° Gain: 1.2 // Half Gain Angle: 30°
	Epson Pro L1070UNL	1	1920x1200 3LCD Projector; 7000 Lumens, 2000:1 Contrast. There is a cage. The cage needs 2 linesets. EX: LS 30 & LS 32
	Extron DTP-HDMI-330Tx	2	Long Distance HDMI over CAT6 - Transmitter
	Extron DTP-HDMI330RTx	2	Long Distance HDMI over CAT6 - Receiver
	Extron Foxbox Tx HDMI MM	2	Long Distance HDMI over MM Fiber - Transmitter
	Extron Foxbox SR HDMI MM	2	Long Distance HDMI over MM Fiber - Receiver
ASSISTIVE LISTENING SYSTEM	ListenTech LT-800 FM Transmitter	1	Installed in Booth Rack
	ART TPS-II	1	monitor microphone preamplifier
	ListenTech LR-500 Receiver	12	includes headphones/earbuds

ELIZABETH ROSS JOHNSON – BACKSTAGE INFORMATION

Stage Management Tech Table Equipment



- 8” Color Shot of Stage
- 8” Infrared Shot of Stage
- 12 Button ETC CueSystem Cue Light Control Box
- 4 Channel ClearCom Bay Station
- God Mic
- Paging Mic

Laundry

There is a shared laundry facility available in the basement outfitted with 2 washing machines and 2 dryers dedicated for ERJ use. All machines are front load machines.

Green Room

The ERJ Green Room is carpeted with upholstered furniture, table, counter, small refrigerator, and microwave. The ERJ Green Room is located on stage level and is outfitted with a 32” Samsung TV displaying a live color shot of the stage, as well as loudspeakers connected to the program and paging system so crew and cast can hear the show and calls from Stage Management.

Dressing Rooms

The ERJ has a total of five (5) dressing rooms each with makeup counters, lighted mirrors, chairs, and a sink. Each dressing room is outfitted with a 32” Samsung TV displaying a color shot of the stage as well as loudspeakers connected to the program and paging system so crew and cast can hear the show and calls from Stage Management.

- 2x Chorus Dressing Rooms on Lower Level
 - Holds 14 persons each
- 2x Dressing Rooms on Stage Level
 - Holds 6 persons each
- 1x Dressing Room on Upper Level
 - Holds 6 persons

Loading Dock Information

60 Bayard St.
New Brunswick, NJ 08901

There are two covered loading bays at a 48” fixed dock height, located within the NBPAC Parking Garage, able to accommodate WB-57 semitrailers. Semitrailers will need to back into the parking garage. Entrance to the stage area is via a 8’-0”W x 10’-0”H overhead roll door (a personnel door is also available).



ARTHUR LAURENTS THEATER



ARTHUR LAURENTS – GENERAL THEATER INFORMATION

The Arthur Laurents Theater (AL) is a proscenium stage fully furnished with soft goods, 15 automated line sets, control booth, catwalks, balcony rail, full theatrical lighting system and an immersive audio system. The stage floor is constructed of two layers of ¾” plywood, installed on 2x4 sleepers on resilient isolators.

Proscenium Opening.....38’ W X 18’ H

Stage Floor*57’ W X 29’ D

Max Line Set Trim25’-6”

*For exact stage dimensions see Stage Dimensions pg. 20

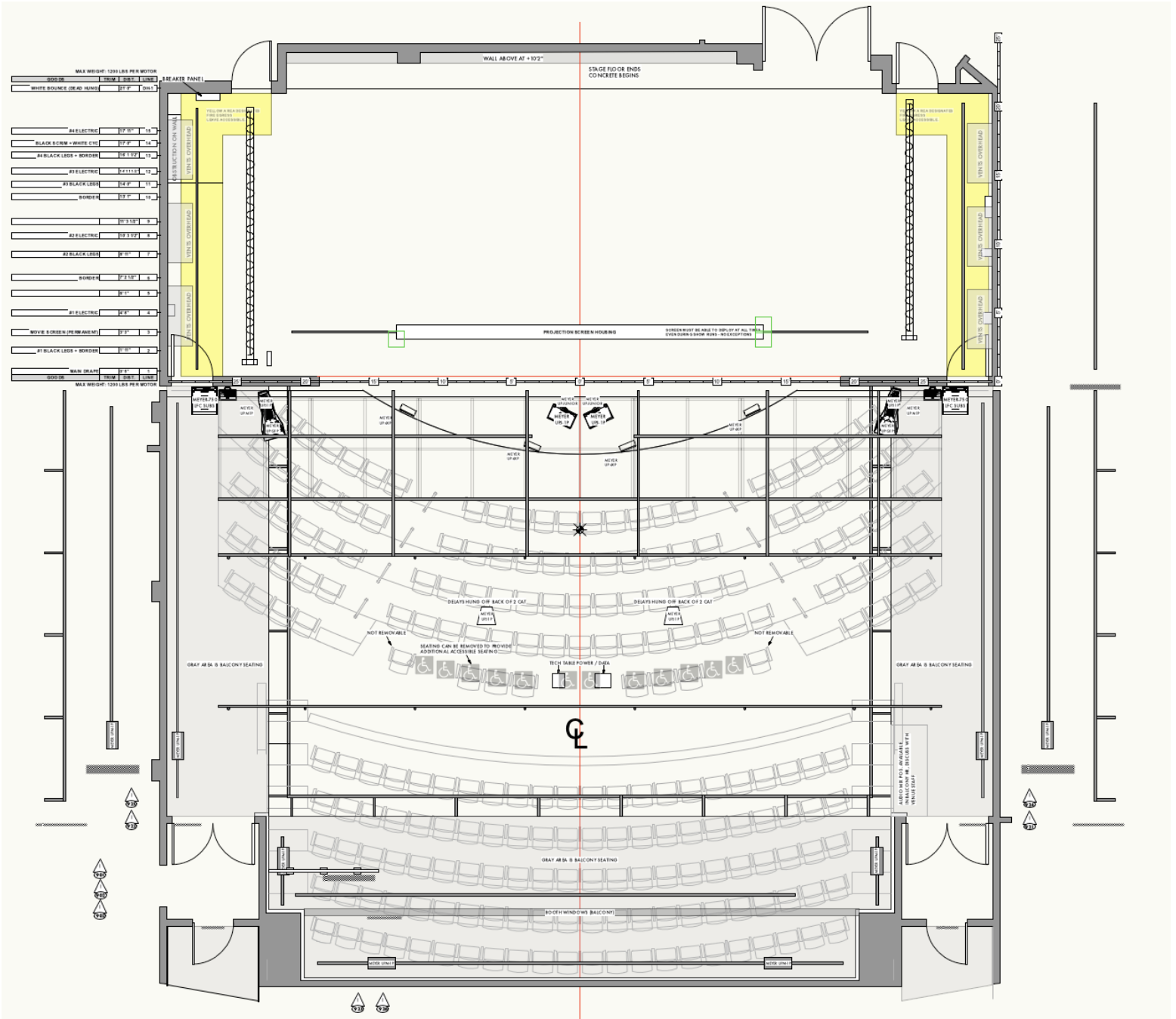
Seating Capacity

Total Capacity 255

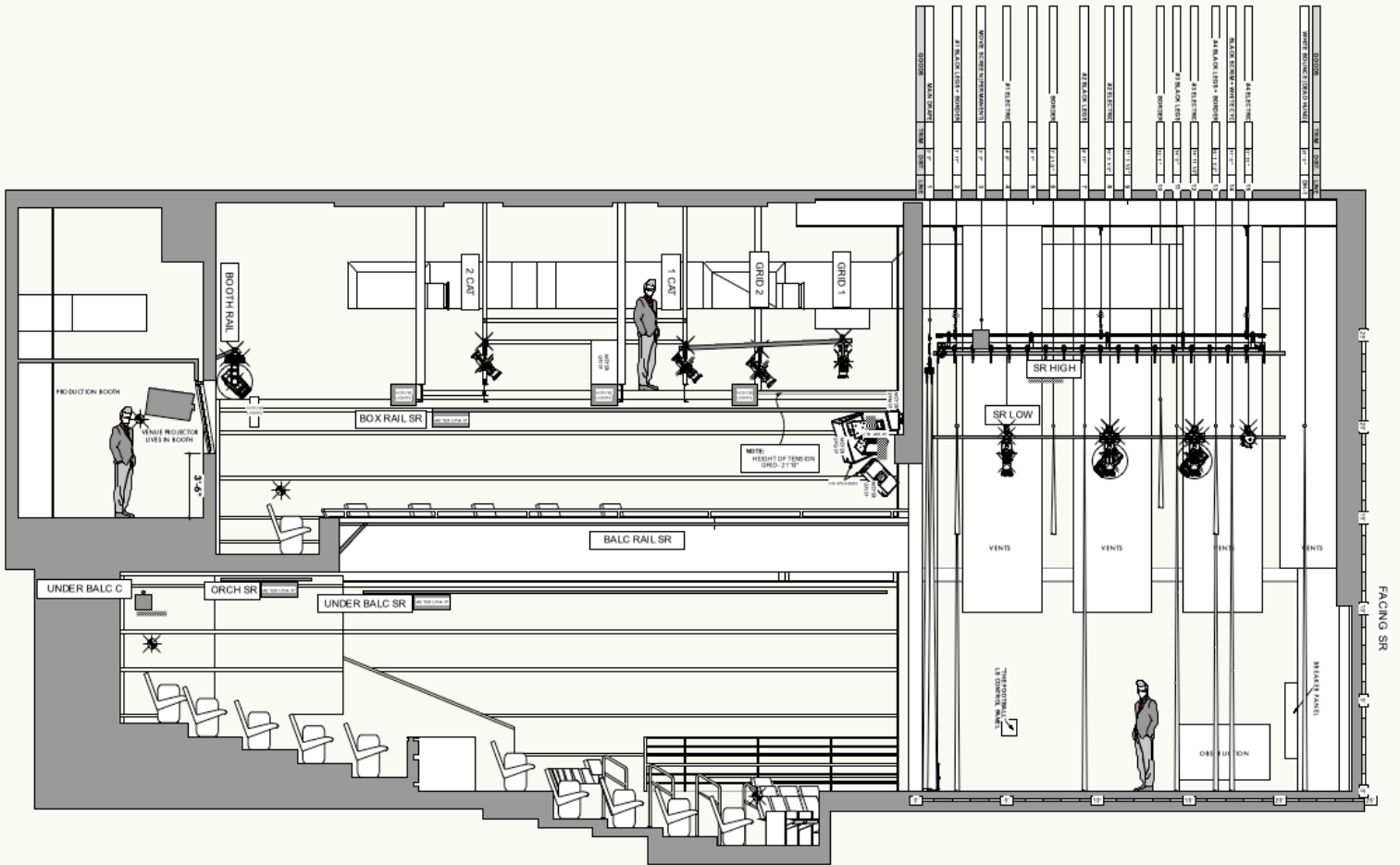
Orchestra 222
(Of which 7 are removable for wheelchair accessibility)

Balcony 33
(Of which 2 are removable for wheelchair accessibility)

ARTHUR LAURENTS – PLAN VIEW



ARTHUR LAURENTS – SECTION VIEW



ARTHUR LAURENTS – STAGE DIMENSIONS

Proscenium	
Width	38'-00"
Height	18'-00"
Stage	
Height above audience level	3'-00"
Depth from apron to back wall	29'-00"
Plaster line to back wall	23'-10"
Apron edge to plaster line	5'-2"
CL to SR wall	27'-9"
CL to SL wall	30'-00"
Leg to leg	30'-8"
Plaster line to scrim	17'-3"
Stage Batten Length	42'-0"
Stage Batten Rigging Spacing	10'-0"
Wings	
SR proscenium edge to SR side wall	8'-7"
SL proscenium edge to SL side wall	10'-11"
Total stage width, wing to wing	57'-9"
Auditorium	
Apron to booth	32'-00"
Apron to balcony rail	26'-9"

ARTHUR LAURENTS – LINE SET SCHEDULE

LS#	Goods	Weight (lbs)	TRIM	Distance	Spacing
-	Plaster Line		-	0' - 0"	0"
LS #1	Main Rag/Track		21' - 7"	0' - 5"	5"
LS #2	#1 Border + Leg		23' - 2"	1' - 11"	18"
LS #3	Movie Screen		23' - 6"	3' - 3"	16"
LS #4	#1 Electrics		19' - 10"	4' - 8"	17"
LS #5				6' - 1"	17"
LS #6	#2 Border		22' - 9"	7' - 2 1/2"	13 1/2"
LS #7	#2 Legs		20' - 0"	8' - 11"	20 1/2"
LS #8	#2 Electrics		19' - 10"	10' - 3 1/2"	16 1/2"
LS #9				11' - 3 1/2"	12"
LS #10	#3 Border		22' - 9"	13' - 1"	21 1/2"
LS #11	#3 Legs		20' - 0"	14' - 0"	11"
LS #12	#3 Electrics		19' - 10"	14' - 11 1/2"	11 1/2"
LS #13	#4 Border		22' - 9"	16' - 1 1/2"	14"
LS #14	Cyc & Scrim		21' - 5"	17' - 0"	10 1/2"
LS #15	#4 Electrics		21' - 0"	17' - 11"	11"
Dead Hang	Bounce		21' - 6"	21' - 0"	37"
* Screen on LS #3 Cannot Be Moved or Obstructed*					
* Line Set Weight Limit: 1200 lbs.		* Pipe Weight: ~117 lbs.			
* All weights listed without pipe weight		* All Line Sets are 42'-0" Total length - 1 1/2" Sched. 40			
* All Line Sets are Motorized – PowerLift P1212R					

ARTHUR LAURENTS – SOFT GOODS INVENTORY

Good	Quantity	Height	Width	Color	Fabric	Fullness	OZ / IFR
Main Drape	1 (2pc)	20' - 0"	22' - 0"	Plumb	Prestige	75%	25 IFR
Legs	8	20' - 0"	8' - 6"	Black	Encore	NONE	22 IFR
Borders	4	6' - 0"	42' - 0"	Black	Encore	NONE	22 IFR
Scrim	1	21' - 6"	42' - 0"	Black	Sharkstooth	NONE	IFR
Cyc	1	21' - 6"	42' - 0"	Natural	Muslin	NONE	IFR
Bounce	1	21' - 6"	42' - 0"	Twin White	Vinyl	NONE	
Tabs	6	21'-6"	6'-0"	Black	Encore	NONE	22 IFR

NOTE: Stage Battens are 42'-0" total length with rigging points at center and every 10'-0" SR / SL

ARTHUR LAURENTS – LIGHTING INFORMATION

Lighting Control Console

- ETC Eos Gio 24k
 - 24,576 outputs with no co-processing
 - ETCNet3™ (ACN- based), ETCNet2™, Artnet and Avab® UPD protocol output
 - Multiple Midi and SMPTE Inputs
 - OSC and UDP Transmit and Receive

Dimming & Control

- ETC CEM3 Sensor Power Control System
 - 384 Dimmers – ETC ThruPower 2.4kw Dimmer Modules
 - 12 – 20A 120V Controlled Breakers (Edison)
 - 12 – 20A 208 Controlled Breakers (L6-20)
- Dimmers, controlled breakers, network data infrastructure, and architectural lighting installed throughout the space.
- Permanently installed RGBA Architectural Wall Lighting – controlled by DMX via the lighting console or House Light Control Panels.
- Work lighting system permanently installed for set up and cleaning.

Lighting Inventory (AL)

Fixture / Accessory	Manufacturer	Quantity
19° Source-4 Ellipsoidal 575w*	ETC	50
26° Source-4 Ellipsoidal 575w*	ETC	40
36° Source-4 Ellipsoidal 575w*	ETC	40
50° Source-4 Ellipsoidal 575w*	ETC	20
Source-4 Par w/ complete lens kit 575w*	ETC	10
Desire D60XTI LED Par Fixture w/ ML & VNR Lenses	ETC	24
Chroma-Q Color Force II 72”	ETC	10
SolaFrame 1000 High CRI	ETC / High End	6
Sidearm 18” Single Tee	Altman	24
Top Hats 6.25” Full / Flocked	City Theatrical	20
4-Leaf Barndoor for D60XTI units	ETC	20
Drop in Iris	ETC	10
Pattern Holders	ETC	30
Donut for 6.25” Units	City Theatrical	30
50lb Boom Base	Altman	6
Heat Shield Border 1’-6”H x 10’-0”W	Zetex	8

* Units can be lamped up to 750w if lamps are provided

* All units have color frames

ARTHUR LAURENTS – AUDIO INFORMATION

Audio Mixing Console

- Yamaha QL5
 - Input Channels: 64 mono: 8 stereo
 - Output: 16 mixes, 8 matrix
 - Fader configuration: 32 + 2 (Master)
- Yamaha Rio3224-D, Digital Mixing Console stage box, 32-in x 16-out + AES Out in Control Room rack. Routes analog audio lines from theatre connection panels to console via Dante network.

Audio Inventory (AL)

SOUND PLAYBACK	Mac Mini	1	DVS, Nuendo Live, QLab 4 // macOS Mojave 10.14.5 // 3.2 GHz Intel Core i7 // 8GB 2667 MHz DDR4 // Intel UHD Graphics 630 1536 MB
	Tascam SS-CDR250N	1	Solid State/CD Recorder/Player
	Tascam IF-DA2	1	Dante Card for Tascam SS-CDR250N
POWERED SPEAKERS	Meyer Sound UPQ-1P	2	Left/Right Cluster TOP
	Meyer Sound UPJ-1P	2	Left/Right Cluster BOTTOM
	Meyer Sound 750-LFC	2	Located in Balcony
	Meyer Sound UPJ-1P	2	Center Cluster TOP
	Meyer Sound UPJunior	2	Center Cluster BOTTOM
	Meyer Sound UP-4XP	4	Front Fills
	Meyer Sound HMS-5	2	Balcony Box Fills
	Meyer Sound UPM-1P	8	2 Rear Surrounds // 2 Side Surrounds // 2 Under Balc Fills // 2 Balc Side Surrounds
	Meyer Sound UPJ-1P	2	Balcony Fills; Mounted to Railing in Catwalk
	Meyer Sound UPM-1P	1	PORTABLE
DIGITAL SIGNAL PROCESSING	Meyer Sound Galileo Galaxy 816	1	Installed in Booth Rack
	Meyer Sound MPS-488	1	Power Supply for HMS-5 and UP-4XP
	SoundWeb BSS London Blu-806DA	1	DSP - Mains MUST go through this for fire safety. NO EXCEPTIONS
	SoundWeb BSS London Blu-BOB1	1	Part of DSP
WIRELESS MICROPHONE SYSTEM	Shure ULXD4Q	2	4 channel digital wireless microphone receiver. Dante capability
	Shure ULXD1	8	wireless bodypack transmitter
	Countryman E6	8	Omnidirectional Earloop - BEIGE
	Countryman B3	8	Omnidirectional Lavalier - BEIGE
	Shure ULXD2/B87a	4	handheld wireless microphone transmitter
	Shure UA874	2	active directional antenna

CLEARCOM INTERCOM SYSTEM	ClearCom HelixNet HMS-4X	1	4 Channel Base Station, Permanently Mounted in AL Rack in the booth.
	ClearCom HelixNet HRM-4X	1	4 Channel Remote Station, Permanently Mounted in AL SM Calling Box
	ClearCom HelixNet HXII-BP-X4	8	digital partyline intercom beltpack
	ClearCom CC-40	8	digital partyline intercom headset
	ClearCom HS-6	2	digital partyline intercom handset
	ClearCom FreeSpeak II-Base-5	1	4 channel wireless com base station. LOCKED AT 5 WIRELESS BELTPACKS
	ClearCom FreeSpeakII Beltpack	5	wireless intercom beltpack; 1.9 GHz
	ClearCom FSII-TVCR-19-US	5	wireless intercom antenna transceiver; HUNG AROUND BUILDING TO ENSURE MAXIMUM SIGNAL COVERAGE; 1.9 GHz
	ClearCom FSII-SPL	2	wireless intercom antenna splitter. 1.9 GHz
	ClearCom AC-60	1	5 unit charging cradle for FreeSpeak beltpacks
PRODUCTION VIDEO SYSTEMS & PROJECTION EQUIPMENT	Panasonic AW-HE130	1	PTZ Camera. Stage Shot. DO NOT USE FOR VIDEO EFFECTS
	Marshall CV365-CGB	1	Infrared Stage Shot Camera. 3MP GenLock Lens
	Tendelux BI18 Illuminator	1	18W; 90 degree beam angle; 12V DC; 850nm wavelength
	Digital Projection HIGHlite Laser Projector	1	3840x2160; 11000 ANSI/12500 ISO Lumens; Contrast Ratio: 2000:1; Aspect Ratio 16.9
	Fixed Wide Lens	1	.77 Throw Ratio. NOT INTENDED FOR USE IN AL THEATRE
	Standard Zoom Lens	1	Throw Ratio of 1.74-2.17
	Draper Paragon E Electric Projection Screen	1	Matte White XT1000E; PERMANENTLY INSTALLED ON LINESET 3 // 353" Diagonal // 0° Gain: 1.0
	Extron DTP-HDMI-330Tx	2	Long Distance HDMI over CAT6 - Transmitter
	Extron DTP-HDMI330RTx	2	Long Distance HDMI over CAT6 - Receiver
	Extron Foxbox Tx HDMI MM	2	Long Distance HDMI over MM Fiber - Transmitter
Extron Foxbox SR HDMI MM	2	Long Distance HDMI over MM Fiber - Receiver	
ASSISTIVE LISTENING SYSTEM	ListenTech LT-800 FM Transmitter	1	Installed in Booth Rack
	ART TPS-II	1	monitor microphone preamplifier
	ListenTech LR-500 Receiver	12	includes headphones/earbuds

ARTHUR LAURENTS – PROJECTOR INFORMATION

HIGHlite Laser 4K

11,000 ANSI / 12,500 ISO Lumens | Contrast Ratio: 2,000:1 | Part Number: 118-081

HIGHLITE LASER 4K 12000
DIGITAL PROJECTOR



THE VISIONARIES CHOICE

INPUTS / OUTPUTS		
Type	Connector	Qty
DisplayPort 1.2	DisplayPort	1
HDMI 2.0	HDMI	2
3G – SDI In	BNC	1
3G – SDI Out	BNC	1
HDBaseT/LAN	LAN RJ45	1

HDTV Formats Supported
1080p (24Hz, 25Hz, 30Hz, 50Hz, 60HzP)
1080i (50Hz, 60Hz)
720p (50Hz, 60Hz)
2K (24Hz, 25Hz, 30Hz, 50Hz, 60Hz)
4K-UHD (24Hz, 25Hz, 30Hz, 50Hz, 60Hz)

Lens	Part No.	Optimized Focus Range
0.77 : 1 fixed HB**	110 - 808	1.3m – 15.0m
1.16 : 1 fixed HB	110 – 809	1.4m – 25.0m
1.45 – 1.74 : 1 zoom HB	110 – 803	1.8m – 9.3m
1.74 – 2.17 : 1 zoom HB*	112 – 878	2.2m – 11.8m
2.17 – 2.90 : 1 zoom HB	113 – 852	2.7m – 15.4m
2.90 – 4.34 : 1 zoom HB	110 – 806	3.6m – 22.5m
4.34 – 6.76 : 1 zoom HB	110 - 807	5.5m – 35m
* Installed Lens		
** Available Lens in stock		

Projector Screen Information	
Screen Type	Front Projection Surface
Size	353” Diagonal
Dimensions	307” W x 172” H

ARTHUR LAURENTS – BACKSTAGE INFORMATION

Stage Management Tech Table Equipment



- 8” Color Shot of Stage
- 8” Infrared Shot of Stage
- 8 Button ETC CueSystem Cue Light Control Box
- 4 Channel ClearCom Bay Station
- God Mic
- Paging Mic

Laundry

There is a shared laundry facility available in the basement outfitted with 1 washing machine and 1 dryer dedicated for AL use. All machines are front load machines.

Green Room

The AL Green Room is carpeted with upholstered furniture, table, counter, small refrigerator, and microwave. The AL Green Room is located on stage level and is outfitted with a 32” Samsung TV displaying a live color shot of the stage, as well as loudspeakers connected to the program and paging system so crew and cast can hear the show and calls from Stage Management.

Dressing Rooms

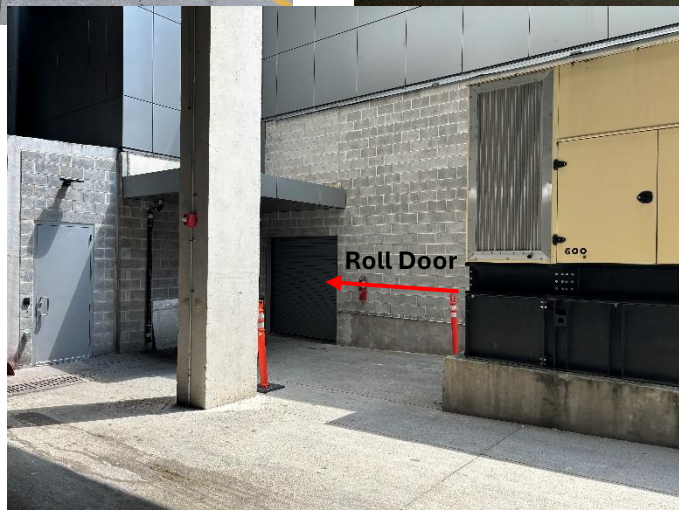
The AL has a total of two (2) dressing rooms each with makeup counters, lighted mirrors, chairs, sink, and private restroom. Each dressing room is outfitted with a 32” Samsung TV displaying a color shot of the stage as well as loudspeakers connected to the program and paging system so crew and cast can hear the show and calls from Stage Management.

- 2x Dressing Rooms on Stage Level
 - Holds 7 persons each

Loading Dock Information

60 Bayard St.
New Brunswick, NJ 08901

The loading area is located within the NBPAC Parking Garage, to the left of the main loading dock. The loading area is on grade with the stage and can accommodate box trucks and cargo vans. Entrance to the stage area is via an 8'-0"W x 8'-0"H overhead roll door.



REHEARSAL ROOMS

- Located on 2nd Floor •

Rehearsal Studio 1 (RH1)

- Size: 26'-0" x 50'-0"
- Max Occupancy: 92

Rehearsal Studio 1 is our Mid-Size Rehearsal Studio overlooking downtown New Brunswick and Monument Square Park, outfitted with a 1 ½" sched. 40 (nom.) pipe grid, sound system, permanently installed ballet bars, and floor to ceiling mirrors.

RH1 Lighting

- *ETC Element 2 (1024 outputs) – Shared between Rehearsal Studios
- 24 Dimmers – ETC ThruPower 2.4kw Dimmer Modules
- 6 – 20A 120V Controlled Breakers (Edison)

RH1 Audio

- 2 – K12.2 Hanging Powered Speakers
- 2 – ULXD2 Wireless Handheld Microphones
- 2 – ULXD1 Wireless Bodypack Microphones
- 1 – ULXD4 2 Channel Wireless Microphone Receiver
- 1 – Rackmount Audio Mixer with Bluetooth

Rehearsal Studio 2 (RH2)

- Size: 28'-0" x 62'-7"
- Max Occupancy: 115

Rehearsal Studio 2 is our Large Rehearsal Studio overlooking downtown New Brunswick and Monument Square Park, outfitted with a 1 ½" sched. 40 (nom.) pipe grid, sound system, permanently installed ballet bars, and floor to ceiling mirrors.

RH2 Lighting

- *ETC Element 2 (1024 outputs) – Shared between Rehearsal Studios
- 24 Dimmers – ETC ThruPower 2.4kw Dimmer Modules
- 6 – 20A 120V Controlled Breakers (Edison)

RH2 Audio

- 2 – K12.2 Hanging Powered Speakers
- 2 – ULXD2 Wireless Handheld Microphones
- 2 – ULXD1 Wireless Bodypack Microphones
- 1 – ULXD4 2 Channel Wireless Microphone Receiver
- 1 – Rackmount Audio Mixer with Bluetooth

Robert and Joan Campbell Donor Lounge (Donor Lounge)

- Size: 26'-0" x 50'-0"
- Max Occupancy: 89

The Donor Lounge is our Upscale Lounge Area for event Donors, Producers, cocktail hours, social get togethers' and can double as a small rehearsal studio. This space has gorgeous hardwood floors and custom wall art by MudGirls Studios that enhances any event. This space is outfitted with a 1 1/2" sched. 40 (nom.) pipe grid, sound system, and floor to ceiling mirrors.

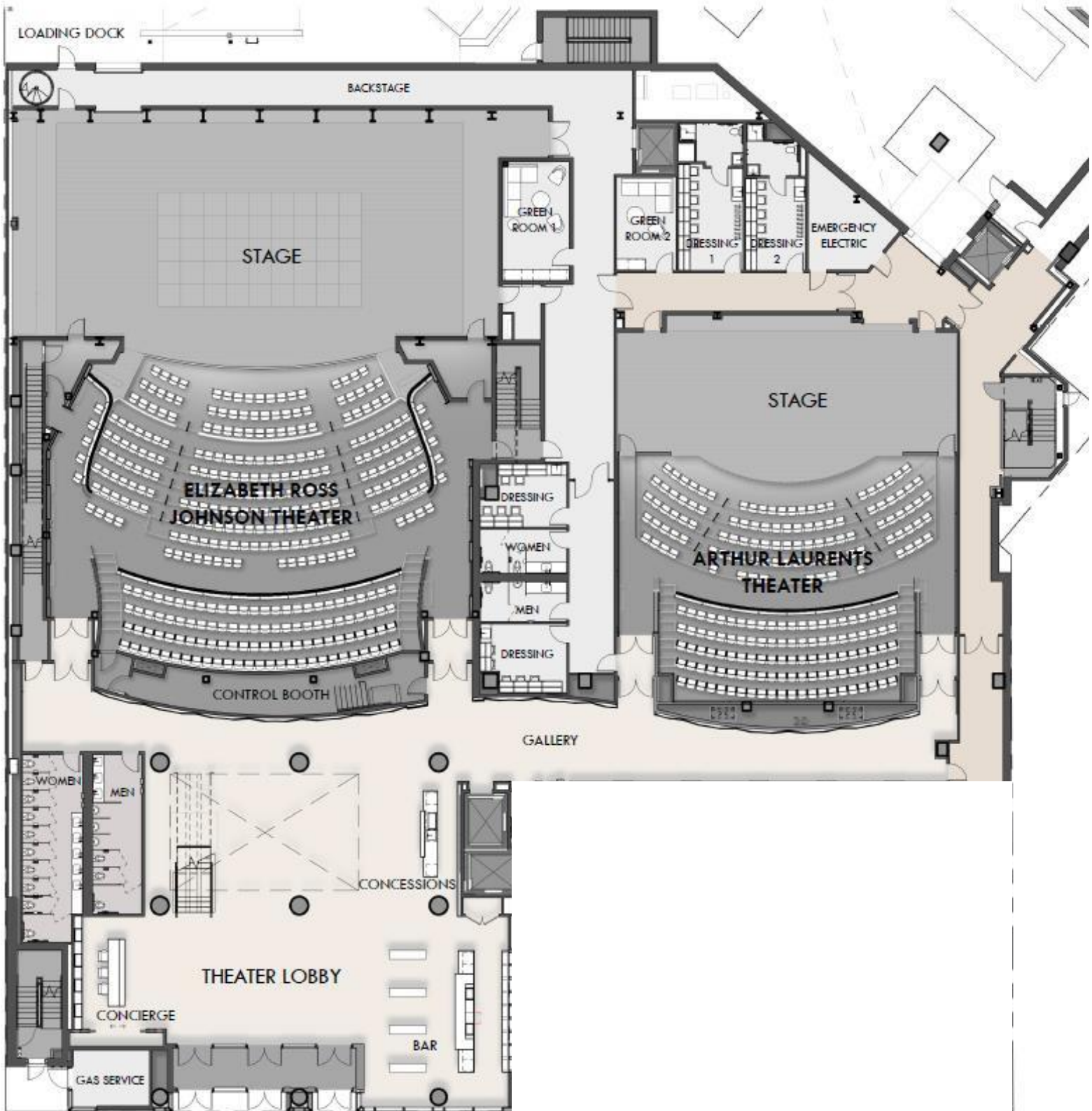
Donor Lounge Lighting

- *ETC Element 2 (1024 outputs) – Shared between Rehearsal Studios
- 24 Dimmers – ETC ThruPower 2.4kw Dimmer Modules
- 6 – 20A 120V Controlled Breakers (Edison)

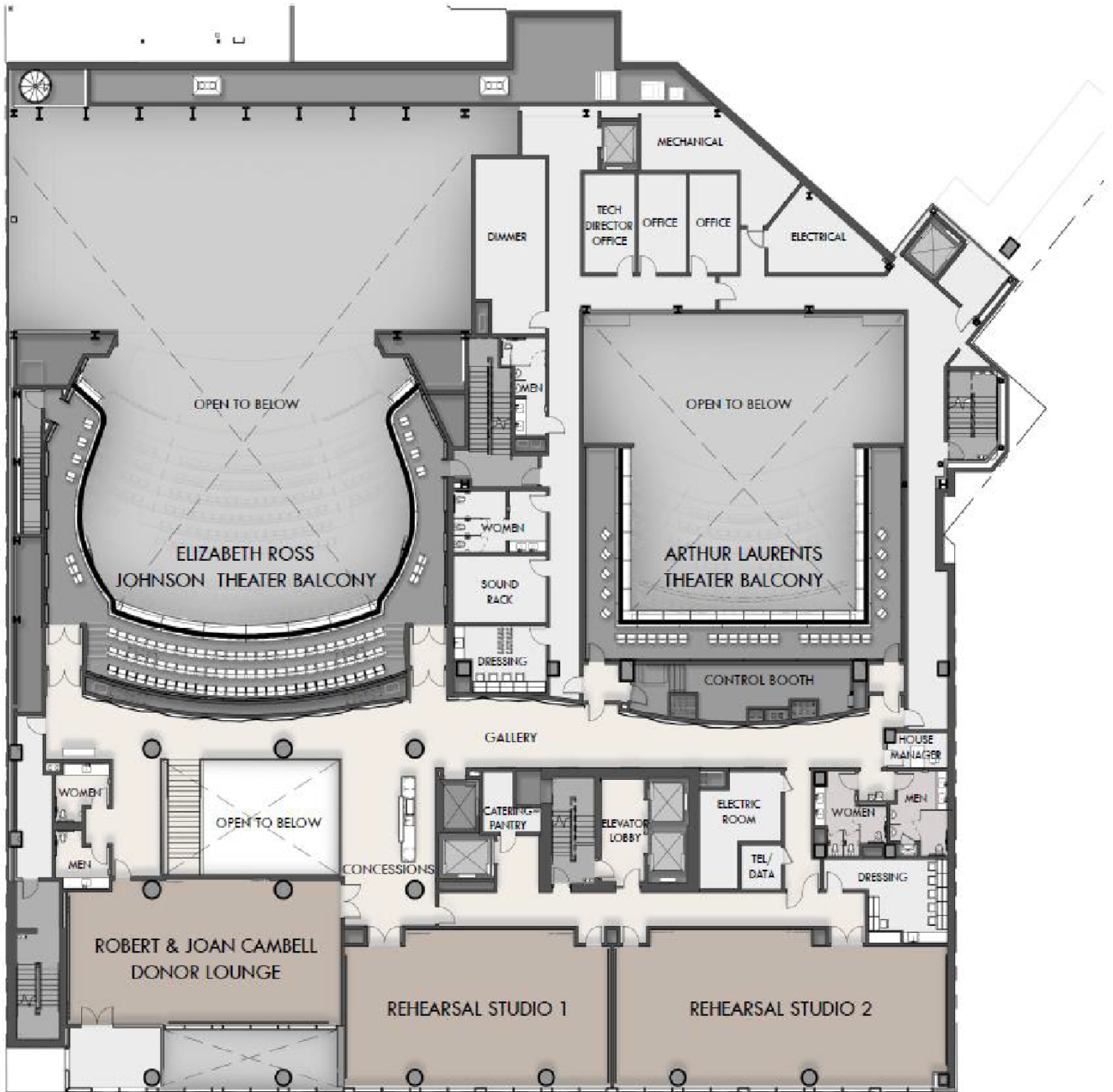
Donor Lounge Audio

- 2 – JBL Control 25 A/V Hanging Powered Speakers
- 2 – ULXD2 Wireless Handheld Microphones
- 2 – ULXD1 Wireless Bodypack Microphones
- 1 – ULXD4 2 Channel Wireless Microphone Receiver
- 1 – Rackmount Audio Mixer with Bluetooth

LEVEL 1 LAYOUT



LEVEL 2 LAYOUT



CONTACT INFORMATION

Director Of OperationsMark Sharp msharp@nbpac.org

Production ManagerTommy Williamson..... twilliamson@nbpac.org

Patron Services Manager

/ Box OfficeVictoria Muscio vmuscio@nbpac.org