

New Brunswick Performing Arts Center

Technical Specifications



11 Livingston Ave
New Brunswick, NJ
08901
www.nbpac.org

TABLE OF CONTENTS

Table of Contents.....	2
General Venue Information Elizabeth Ross Johnson Theater.....	3
Lineset and Flyrail Information Elizabeth Ross Johnson Theater.....	8
Soft Good Information Elizabeth Ross Johnson Theater.....	9
Lighting and Electrics Information Elizabeth Ross Johnson Theater.....	10
Sound and Communications Information Elizabeth Ross Johnson Theater	13
Stage Management Tech Table Equipment Information Elizabeth Ross Johnson Theater	21
Backstage Information Elizabeth Ross Johnson Theater	21
Loading Dock Information Elizabeth Ross Johnson Theater	21
General Venue Information Arthur Laurents Theater	22
Lineset and Flyrail Information Arthur Laurents Theater	27
Soft Good Information Arthur Laurents Theater	27
Lighting and Electrics Information Arthur Laurents Theater	28
Sound and Communications Information Arthur Laurents Theater	31
Stage Management Tech Table Equipment Information Arthur Laurents Theater	39
Projector Information Arthur Laurents Theater	40
Backstage Information Arthur Laurents Theater	45
Loading Dock Information Arthur Laurents Theater.....	45
Green Room and Dressing Room Information.....	46
Wardrobe Facility Information.....	46
Rehearsal Rooms.....	47
Theater and Lobby Level Layout	50
Balcony and Rehearsal Hall Level Layouts	51
Contacts.....	52

Elizabeth Ross Johnson Theater

General Venue Information



Venue Type

Proscenium Theatre

48'x26'

Stage Floor

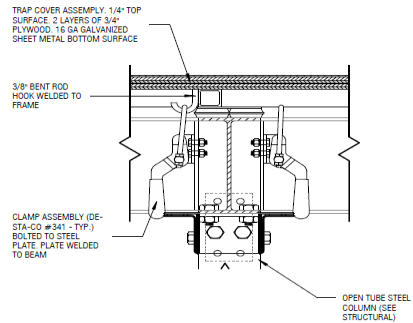
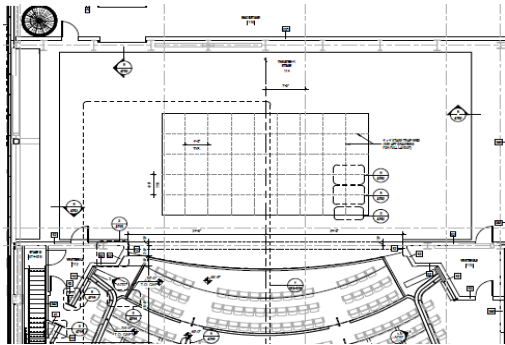
The stage floor is constructed of two layers of $\frac{3}{4}$ " plywood, installed on 2x4 sleepers on resilient isolators. Performance surface is $\frac{1}{4}$ " tempered hardboard.

Fly Tower

46 Linesets with 63'-6" fly space from floor to out trim, counterweight system

Trap Room

4'x4' module



Orchestra Pit

Up to 60 seats

Balcony with Balcony Rail Position

Follow Spot Booth

Located on third floor, equipped with two (2) Follow Spots (see lighting inventory)

Seating

Total Capacity 465

Orchestra 365

(Of which 7 are removable for wheelchair accessibility, 10 are removable for sound mixing position)

Balcony 100

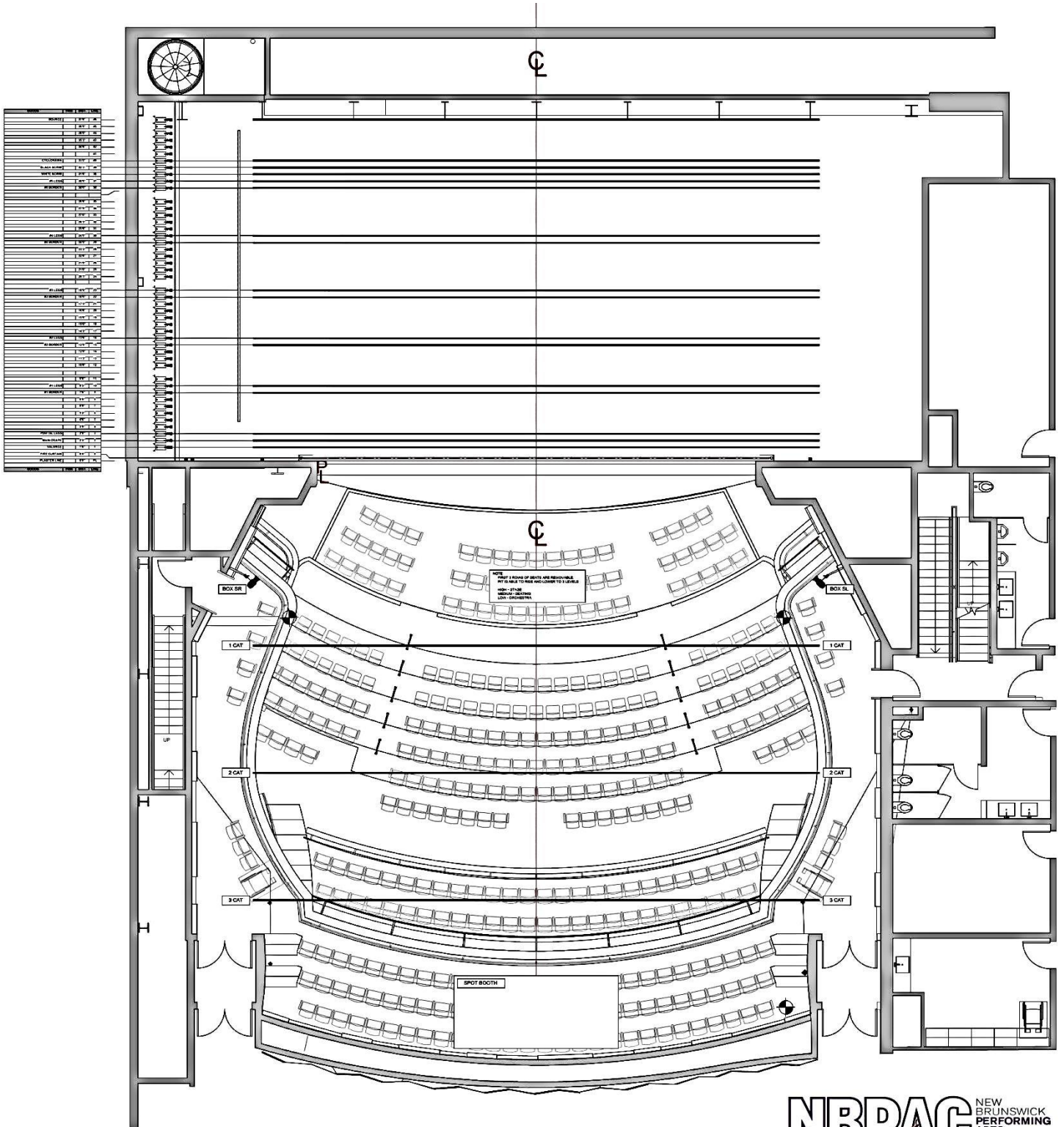
(Of which 2 are removable for wheelchair accessibility)

Orchestra pit is in use

17 unusable seats for $\frac{1}{2}$ orchestra pit use

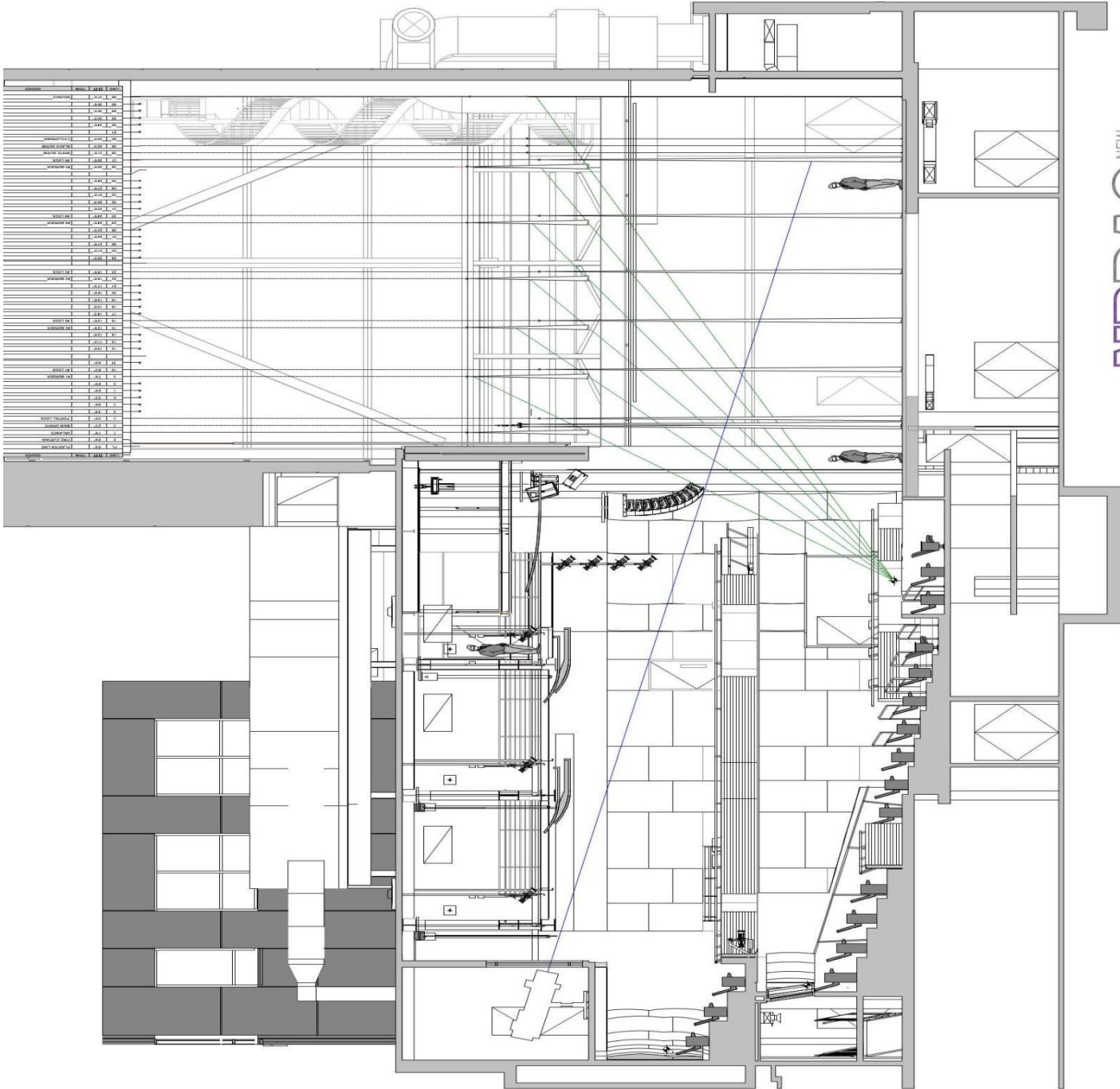
58 unusable seats for full orchestra pit use

Plan View ERJ



NBPAC NEW BRUNSWICK PERFORMING ARTS CENTER

Section View ERJ



NEW BRUNSWICK
PERFORMING
ARTS
CENTER
NBPAC

Stage Dimensions ERJ

Proscenium	
Width	48'-00"
Height	26'-00"
Stage	
Height above audience level	3'-6"
Depth from apron to back wall	45'-00"
Plaster line to back wall	39'-9"
Apron edge to plaster line	5'-3"
CL to SR wall/flyrail	39'-00"
CL to SL wall/flyrail	42'-00"
Wings	
SR proscenium edge to SR side wall/flyrail	15'-00"
SL proscenium edge to SL side wall/flyrail	18'-00"
Total stage width, wing to wing <i>Excludes counterweight pit</i>	81'-00"
Orchestra Pit <i>Equipped with two fixed-speed hydraulic orchestra lifts; functional at stage, house and pit levels</i>	
Below stage level (stage position)	0'-00"
Below stage level (house position)	3'-6"
Below stage level (pit position)	13'-11"
Usable space for orchestra	768 sq. ft
Seating capacity	60 seats
Auditorium	
Apron to booth	52'-00"
Apron to balcony rail	47'-00"
Trap Room <i>Stage Trap Dimension (4'x4' module)</i>	
Width	36'-00"
Depth	20'-00"
Height	11'-8"

Lineset Schedule ERJ:

46 linesets, 9" spacing, 1,985# load capacity (counterweight rigging). 62'-0" long battens (1 1/2" Schedule 40)

Lineset #	Distance	Wgt. lbs	Length	Batten Trim		Rigging Type	Rep. Usage
				Low	High		
Smoke Pocket	0'-4"		51'-00"	Low	High	Electronic Motor Winch	Fire Curtain
1	1'-6"	2175	62'-00"	4'-00"	63'-6"	Counterweight	Valance
2	2'-3"	2175	62'-00"	4'-00"	63'-6"	Counterweight	Traveler Track w/Main Drape
3	3'-00"	2175	62'-00"	4'-00"	63'-6"	Counterweight	
4	3'-9"	2175	62'-00"	4'-00"	63'-6"	Counterweight	
5	4'-6"	2175	62'-00"	4'-00"	63'-6"	Counterweight	
6	5'-3"	2175	62'-00"	4'-00"	63'-6"	Counterweight	
7	6'-00"	2175	62'-00"	4'-00"	63'-6"	Counterweight	
8	6'-9"	2175	62'-00"	4'-00"	63'-6"	Counterweight	
9	7'-6"	2175	62'-00"	4'-00"	63'-6"	Counterweight	#1 Border
10	8'-3"	2175	62'-00"	4'-00"	63'-6"	Counterweight	#1 Legs
11	9'-00"	2175	62'-00"	4'-00"	63'-6"	Counterweight	
12	10'-6"	2175	62'-00"	4'-00"	63'-6"	Counterweight	
13	11'-3"	2175	62'-00"	4'-00"	63'-6"	Counterweight	
14	12'-00"	2175	62'-00"	4'-00"	63'-6"	Counterweight	
15	12'-9"	2175	62'-00"	4'-00"	63'-6"	Counterweight	#2 Border
16	13'-6"	2175	62'-00"	4'-00"	63'-6"	Counterweight	#2 Legs
17	14'-3"	2175	62'-00"	4'-00"	63'-6"	Counterweight	
18	15'-00"	2175	62'-00"	4'-00"	63'-6"	Counterweight	
19	15'-9"	2175	62'-00"	4'-00"	63'-6"	Counterweight	
20	16'-6"	2175	62'-00"	4'-00"	63'-6"	Counterweight	
21	17'-3"	2175	62'-00"	4'-00"	63'-6"	Counterweight	
22	18'-00"	2175	62'-00"	4'-00"	63'-6"	Counterweight	#3 Border
23	18'-9"	2175	62'-00"	4'-00"	63'-6"	Counterweight	#3 Legs
24	20'-3"	2175	62'-00"	4'-00"	63'-6"	Counterweight	
25	21'-00"	2175	62'-00"	4'-00"	63'-6"	Counterweight	
26	21'-9"	2175	62'-00"	4'-00"	63'-6"	Counterweight	
27	22'-6"	2175	62'-00"	4'-00"	63'-6"	Counterweight	
28	23'-3"	2175	62'-00"	4'-00"	63'-6"	Counterweight	
29	24'-00"	2175	62'-00"	4'-00"	63'-6"	Counterweight	#4 Border
30	24'-9"	2175	62'-00"	4'-00"	63'-6"	Counterweight	#4 Legs
31	25'-6"	2175	62'-00"	4'-00"	63'-6"	Counterweight	
32	26'-3"	2175	62'-00"	4'-00"	63'-6"	Counterweight	
33	27'-00"	2175	62'-00"	4'-00"	63'-6"	Counterweight	
34	27'-9"	2175	62'-00"	4'-00"	63'-6"	Counterweight	
35	28'-6"	2175	62'-00"	4'-00"	63'-6"	Counterweight	
36	30'-00"	2175	62'-00"	4'-00"	63'-6"	Counterweight	#5 Border
37	30'-9"	2175	62'-00"	4'-00"	63'-6"	Counterweight	#5 Legs
38	31'-6"	2175	62'-00"	4'-00"	63'-6"	Counterweight	White Scrim
39	32'-3"	2175	62'-00"	4'-00"	63'-6"	Counterweight	Black Scrim
40	33'-00"	2175	62'-00"	4'-00"	63'-6"	Counterweight	Cyclorama
41	33'-9"	2175	62'-00"	4'-00"	63'-6"	Counterweight	
42	34'-6"	2175	62'-00"	4'-00"	63'-6"	Counterweight	
43	35'-3"	2175	62'-00"	4'-00"	63'-6"	Counterweight	
44	36'-00"	2175	62'-00"	4'-00"	63'-6"	Counterweight	
45	36'-9"	2175	62'-00"	4'-00"	63'-6"	Counterweight	
46	37'-6"	2175	62'-00"	4'-00"	63'-6"	Counterweight	Bounce

Soft Goods and Draperies ERJ:

1 Valence (10' High) – IFR 25 oz. Prestige – 75% fullness

2 Main drape - IFR 25 oz. Prestige – 75% fullness

12 Leg Curtains – IFR 22 oz. Encore

5 Border Curtains – IFR 22 oz. Encore

8 side tab curtains (8'-0" Wide) – IFR 22 oz. Encore

2 scrim curtains (1 Black, 1 white) - Sharkstooth

1 each Bounce and Cyclorama curtains (Muslin and Twin White, respectively)

Lighting and Electrics Information ERJ:

Lighting Control Console:

Eos Titanium (Eos Ti) 24k

- From 4,096 or 24,576 outputs with no co-processing.
- Dedicated master playback fader pair
- 10 definable motorized faders, with 100 pages of control
- 20 user-definable buttons
- Dedicated pan/tilt encoders, four pageable haptic encoders with associated multi-touch display.
- Two integral articulating 18.5" LCD multi-touch displays
- Supports three external high resolution Display Port monitors; can be single- or multi-touch
- Three user-definable workspaces per monitor, each with discrete split-screen controls and frame management. Additionally, single- or multiple-screen snapshots allow instant reconfiguration.
- Custom-design your control interface using Magic Sheets, with topographical or abstract layouts. Full interaction with the command line allows command instructions - from the simplest and most immediate to the most complex - accessed from a mouse or single- or multi-touch displays.
- Configure and program pixel-map layouts, using integral or custom-designed content.
- Device discovery and troubleshooting via RDM
- ETC Sensor® CEM+, CEM3™ and FDX dimmer feedback and controls
- ETCNet3™ (ACN- based), ETCNet2™, Artnet and Avab® UPD protocol output
- Integrated keyboard drawer with USB ports
- External Backlit alpha-numeric keyboard
- Multiple MIDI and SMPTE Inputs
- OSC and UDP Transmit and Receive
- Client/server networking and synchronized backup
- Client and Offline programming on PC (Windows 7 or higher) and native on Macintosh (El Capitan v10.11 or later), via ETCnomad™
- Data-laundering from Obsession™, Express™, Expression®, Emphasis®, Congo®, Cobalt™, Transtechnik NT, Avab VLC, Grand MA1, Grand MA2 and Strand 500/300 series show files.
- 99 discrete online users with partitioned control

Dimming Control:

Sensor3 Power Control system

576 Dimmers @ 2.4kW Thru-Power Modules, 24 @ 20A 120V controlled breakers; 24 @ 20A 208V controlled breakers, network data infrastructure, architectural lighting control with power and DMX control for LED house lights. Power distributed to stage, over stage, and catwalk lighting positions through a network of receptacles in custom enclosures.

Work lighting system for cleaning and set up – controlled by relays in the theatrical distribution system.

Lighting Instrument Inventory ERJ:

Item #	Description	Manufacture	Quantity
1	10 Degree Source-4 Ellipsoidal, 120v/750W	ETC	8
2	14 Degree Source-4 Ellipsoidal, 120v/750W	ETC	20
3	19 Degree Source-4 Ellipsoidal, 120v/750W	ETC	60
4	26 Degree Source-4 Ellipsoidal, 120v/750W	ETC	40
5	36 Degree Source-4 Ellipsoidal, 120v/750W	ETC	30
6	50 Degree Source-4 Ellipsoidal, 120v/750W	ETC	12
7	Source-4 Par 120v/575W w/complete Lens Kit	ETC	10
8	Followspot Long Throw, 400W HTI	Lycian	2
9	Desire D60XTI Vivid, LED Wash Fixture, Color Mixing, x7 color system LED array	ETC	32
10	ColorSource Cyc, Cyclorama Wash Fixture, Color Mixing, RGBI-L	ETC	18
11	High End SolaFrame 1000 CRI Automated Framing Fixture	ETC	10

Lighting Accessories Inventory ERJ:

Item #	Description	Manufacture	Quantity
1	Sidearm 18" Single Tee	Altman	40
2	Spare C-Clamps	ETC	10
3	Scenery Bumper	Altman	8
4	Top hats for 6.25" equipment	City Theatrical	30
5	4-Leaf Barndoor for Wash Fixture	ETC	20
6	Drop In Iris	ETC	10
7	Pattern holders for Ellipsoidal	ETC	30
8	Donut for 19-50 deg.	ETC/ City Theatrical	30
9	Spare Safety Cables (32")	ETC / Fehr Brothers	30
10	Spare 10 Degree Color Frame (6.25")	ETC/ City Theatrical	2
11	Spare 14 Degree Color Frame (7.5")	ETC/ City Theatrical	5
12	Spare 19-50 Degree Color Frame (6.25")	ETC/ City Theatrical	30
13	Spare 2P&G Connectors		10
14	18'-0" x 1-1/2" dia. (nom.) steel pipe schedule 40		8
15	Tie-Off Boom Cap for 1-1/2" dia. (nom.) pipe		8
16	50lb stationary lighting base	Altman	8
17	Heat Shield Border, 1'-6"H x 10'-0"W		12

Power Cable - Stage Pin Inventory ERJ:

Item #	Description	Manufacture	Quantity
1	Jumper cable - 20 amp - 5'		20
2	Jumper cable - 20 amp - 10'		20
3	Jumper cable - 20 amp - 25'		20
4	Jumper cable - 20 amp - 50'		8
5	Twofer - 20 amp (molded)		40
6	Adapter - Male 20A Stage Pin to Female 20A Edison		20
7	Multi-cable extension - 6 circ - 10' (12ga 14con)		5
8	Multi-cable extension - 6 circ - 25' (12ga 14con)		10
9	Multi-cable extension - 6 circ - 50' (12ga 14con)		30
10	Male Veam to Female Stage Pin Fan Out		40

Power Cable - L6-20 ERJ:

Item #	Description	Manufacture	Quantity
1	Jumper cable - 20 amp - 10'		10
2	Jumper cable - 20 amp - 25'		20
3	Jumper cable - 20 amp - 50'		5

Power Cable – Edison ERJ:

Item #	Description	Manufacture	Quantity
1	Jumper cable - 20 amp - 5'		10
2	Jumper cable - 20 amp - 10'		10
3	Jumper cable - 20 amp - 25'		10
4	Jumper cable - 20 amp - 50'		10

Power Cable – PowerCON ERJ:

Item #	Description	Manufacture	Quantity
1	Jumper cable - 20 amp - 5'		5
2	Jumper cable - 20 amp - 10'		20
3	Jumper cable - 20 amp - 25'		10

Control Cable Inventory ERJ:

Item #	Description	Manufacture	Quantity
1	Network Cable - 5'		10
2	Network Cable - 10'		20
3	Network Cable - 25'		20
4	Network Cable - 50'		5
5	DMX Cable - 5'		10
6	DMX Cable - 10'		20
7	DMX Cable - 25'		20
8	DMX Terminator		5

Sound and Communications Information ERJ:

Digital Mixing Console:

Yamaha CL5

w/ 2x Yamaha Rio3224-D, Digital Mixing Console stagebox, 32-in x 16-out + 4 AES Out

In Control Room rack. Routes analog audio lines from theatre connection panels to console via Dante network

- Input channels: 72 mono, 8 stereo.
- Fader configuration: 16-fader left section, 8-fader Centralogic section, 8-fader right section, 2-fader master section .
- Stainless steel stay for iPad support.
- Built-in meter bridge

Sound Playback ERJ:

Item #	Description	Manufacture
1	Mac Mini Sound Playback Computer	Apple Mac Mini
2	EXT-DVIKVM-LANTX, DVI KVM over IP TX	Gefen
3	Qlab 3 Pro Bundle, Sound Playback Software	Figure53
4	Dante Digital Networking Virtual Soundcard Software, Installed on Qlab Mac Mini	Audinate
5	Dante, Sound Digital Networking Control Software, Installed on general purpose computer	Audinate
6	MIDISport, MIDI Interface for Qlab Mac Mini	M-Audio
7	LaCie, External Hard Drive for Mac Mini	LaCie
8	88 C06 Dante, Patch Panel Power Amplifier, 8-channel, 750W	Linea Research
9	SS-CDR250N, Solid-state / CD recorder / player	Tascam
10	IF-DA2, Solid-state / CD recorder / player Dante interface	Tascam
11	OR2200PFCRT2U, UPS/Power distribution for rack	CyberPower

Digital Signal Processing ERJ:

Item #	Description	Manufacture	Quantity
1	Galileo Galaxy 816, Digital audio signal processing system	Meyer Sound	2
2	MPS-488, Digital audio signal processing power supply	Meyer Sound	1
3	BLU-806, Digital Signal Processor	BSS	1
4	BLUCARD-IN, Digital Signal Processor - Analog Input Card	BSS	2
5	BLUCARD-OUT, Digital Signal Processor - Analog Output Card	BSS	2
6	BLU-BOB1, Digital Signal Processor analog output box	BSS	2
7	CP825AVRLCD, Uninterruptable Power Supply	CyberPower	1
8	PL-8, Racklight module	Furman	1
9	GRR-10L-10U, Rolling Rack	Gator Cases	1

General Purpose Programming & Control ERJ:

Item #	Description	Manufacture
1	General Purpose Programming & Control Computer, Windows 10 Professional, Intel i7 3.0 GHz, 8GB RAM, 500GB SSD	Custom
2	EXT-DVIKVM-LANTX, DVI KVM over IP TX	Gefen
3	EXT-DVIKVM-LANRX, DVI KVM over IP RX	Gefen
4	1USHL-112, Sliding Computer Shelf	Rack Solutions
5	5 x WS-C2960X-24PS-L, Ethernet Gbit managed Switch - 24 Port w/ 4 SFP slots and PoE+	Cisco
6	B48DC-FNPITE3M20U7L, Mic / Line Level Patch Panel (1/4" TRS)	Bittree
7	SR-40-22, Swing out equipment rack	Middle Atlantic
8	UD3, Rack Drawer (3U)	Middle Atlantic
9	VT series, Rack vent panels	Middle Atlantic
10	HBL series, Rack blank panels	Middle Atlantic
11	OR2200PFCRT2U, UPS/Power distribution for rack	CyberPower

Wireless Microphone System ERJ:

Item #	Description	Manufacture	Quantity
1	ULXD4Q, 4-channel digital wireless microphone receiver	Shure	2
2	ULXD1, Bodypack wireless microphone transmitter	Shure	8
3	E6 Omni, Earloop Miniature Microphone, Beige	Countryman	8
4	B3 Omni, Lavalier Miniature Microphone, Beige	Countryman	8
5	ULXD2 / B87A, Handheld wireless microphone transmitter	Shure	4
6	UA874, Active Directional Antenna w/ 2x antenna coax cable 25'	Shure	2
7	CP825AVRLCD, Uninterruptable Power Supply	CyberPower	1
8	PL-8, Racklight module	Furman	1
9	GRR-10L-10U, Rolling Rack	Gator Cases	1

Installed Loudspeakers ERJ:

Item #	Description	Manufacture	Quantity
1	LINA, Stage left / stage right line arrays	Meyer Sound	20
2	900-LFC, Stage left / stage right subwoofers	Meyer Sound	2
3	UPQ-1P, Center cluster - top	Meyer Sound	1
4	UPJ-1P, Center cluster - bottom	Meyer Sound	2
5	UP-4XP, Front fills	Meyer Sound	4
6	HMS-5, Side box fills	Meyer Sound	4
7	UPM-1P, Side effects / surround speakers (portable)	Meyer Sound	12

Communication System ERJ:

Item #	Description	Manufacture	Quantity
1	HMS-4X, Digital Partyline Intercom 4-channel base station	Clear-Com HelixNet	1
2	HRM-4X, Digital Partyline Intercom 4-channel remote station	Clear-Com HelixNet	1
3	HLI-2W2, Digital Partyline Intercom wireless / 2-wire interface module	Clear-Com HelixNet	1
4	HLI-ET2, Digital Partyline Intercom Ethernet Linking module	Clear-Com HelixNet	1
5	HLI-FBS, Digital Partyline Intercom Fiber Optic Linking module	Clear-Com HelixNet	1
6	JPS60A-24, Cat-6A Patch Panel, for shielded CAT6A cable, 24-port frame	Black Box	2
7	FMS300, Cat-6A Patch Panel, shielded CAT6A jack	Black Box	48
8	6AS10-3L, Cat-6A Patch Cable, shielded	Leviton	20
9	HKB-2X, Digital Partyline Intercom speaker station	Clear-Com HelixNet	2
10	HXII-BP-X4, Digital Partyline Intercom beltpack	Clear-Com HelixNet	16
11	CC-40, Digital Partyline Intercom headset	Clear-Com	16
12	HS-6, Digital Partyline Intercom handset	Clear-Com	4
13	FreeSpeak II-Base-5, Wireless Intercom Base Station, 1.9GHz	Clear-Com	1
14	FreeSpeak II Beltpack, Wireless Intercom Beltpack Transceiver, 1.9GHz	Clear-Com	5
15	FSII-TVCR-19-US, Wireless Intercom Antenna Transceiver, 1.9GHz	Clear-Com	5
16	FSII-SPL, Wireless Intercom Antenna Splitter, 1.9GHz	Clear-Com	2
17	WS-C2960X-24PS-L, Ethernet Gbit managed Switch - 24 Port w/ 4 SFP slots and PoE+	Cisco	4

Production Video Systems & Projection Accommodation ERJ:

Item #	Description	Manufacture	Quantity
1	AW-HE130, Program Camera, Color, (fixed stage view)	Panasonic	1
2	Variable focal length lens, 1/3", f/1.2, AI (stage view)	Fujinon / Canon	1
3	WVCP504, Production Camera, Infrared (fixed stage view)	Panasonic	1
4	Variable focal length lens, 1/3", f/1.2, AI (stage view)	Fujinon / Canon	1
5	CSI-IR50m60, Infrared illuminator, LED, 55W	Cantronic	1
6	631-0025, Bracket with under mount assembly	Cantronic	1
7	Smart Videohub 40x40, 40x40 HD/SDI Video Matrix	Blackmagic Designs	1
8	Mini Converter SDI to HDMI, HD/SDI to HDMI converter	Blackmagic Designs	4
9	Monarch LCS, Video recording / streaming appliance	Matrox	1
10	DTP-HDMI-330-Tx, Long distance HDMI over CAT6 - transmit	Extron	4
11	DTP-HDMI-330-RTx, Long distance HDMI over CAT6 - receive	Extron	4
12	FOXBOX Tx HDMI MM, Long distance HDMI over MM Fiber - transmit	Extron	2
13	FOXBOX SR HDMI MM, Long distance HDMI over MM Fiber - scaling receiver	Extron	2
14	DM55E, FOH Displays, 55" diagonal, landscape orientation, some dedicated to late seating video display	Samsung	4
15	Micro Converter SDI to HDMI, HD/SDI to HDMI converter, for interfacing video camera output to displays for latecomer video monitoring	Blackmagic Designs	4

Program Monitor / Paging / Audience Recall System ERJ:

Item #	Description	Manufacture
1	BLU-806, Digital Signal Processor	BSS
2	BLUCARD-IN, Digital Signal Processor - Analog Input Card	BSS
3	BLUCARD-OUT, Digital Signal Processor - Analog Output Card	BSS
4	BLU-BOB1, Digital Signal Processor analog output box	BSS
5	BLU-BIB1, Digital Signal Processor analog input box	BSS
6	44 C10, Networked amplifier, for BOH / FOH 70V Ceiling / Wall Loudspeakers	Linea Research
7	MP-1216, Amplified Monitor Panel	TOA
8	EC-4B-BLK, Paging Station with volume & mute switch controller	BSS
9	HKB-2X, Production intercom digital partyline wall speaker station	Clear-Com HelixNet
10	110/100, Production intercom speaker station microphone	Clear-Com HelixNet
11	514B, Push-to-talk Microphone with panel mount clip	Shure
12	CMS-501DC, 70V Loudspeaker, Ceiling Mount, front of house lobbies, flush mount	Tannoy
13	Ctrl 26CT, 70V Loudspeaker, Ceiling Mount, back of house, flush mount	JBL
14	Ctrl 26-DT 70V Loudspeaker, Ceiling Mount, back of house, surface mount	JBL

Racks, Systems & Networking ERJ:

Item #	Description	Manufacture	Quantity
1	MRK-4431, Equipment racks & accessories	Middle Atlantic	
2	VT series, Rack vent panels	Middle Atlantic	
3	HBL series, Rack blank panels	Middle Atlantic	
4	UD3, k Drawer (3U)	Middle Atlantic	
5	B48DC-FNPITE3M20U7L, Mic / Line Level Patch Panel (1/4" TRS)	Bittree	
6	Universal Bulkhead, Loudspeaker Patch Panel, Populated with Neutrik Speakon connectors	AVP	
7	261U-DVJAW, Video patch panels	Canare	
8	SYSTIMAX (Copper), RJ45 Patchbays - Cat 6a Shielded	Commscope	
9	FEUR24LCM, Fiber Patch Panel, w/ Leviton 481RU-HFO 1RU front cable management	Hubbell	
10	WS-C2960X-24PS-L, Ethernet Gbit managed Switch - 24 Port w/ 4 SFP slots and PoE+	Cisco	3
11	System Control/Programming general purpose computer - Windows 10, minimum specs: Intel i7 3.0 GHz, 8GB RAM, 500GB SSD. Computer pre-loaded with ALL programming/control software for equipment used within Rack Rooms.	Custom	1
12	SMK-520S19, Slide-Out Rack Display/Keyboard	CMS	1
13	N-Port 5610, Serial to IP converter - 8 port	Moxa	1
14	OR2200PFCRT2U, UPS/Power distribution for rack	CyberPower	1
15	DA208, Dual 1x4 Audio DA	ATI Audio	1
16	MK425, Standard Mic / IC cable, 25'	Whirlwind	20
17	LPC2400-110, 1/4" patch cords, 2'	Bittree	40
18	LPC3600-110, 1/4" patch cords, 3'	Bittree	40
19	LPC4800-110, 1/4" patch cords, 4'	Bittree	10
20	SBCTLK01, E3 Tool Kit	Bittree	1
21	E3-Mult, E3 Mult	Bittree	4
22	CCA0196, E3 to blunt - 15'-0"	Bittree	20
23	Plot, Audio PatchBay Programmable Shunts	Bittree	2
24	VAC-025F, Video cables (BNC), 25'	Canare	5
25	VPC-002F, Video patch cables (2')	Canare	15
26	VPC-003F, Video patch cables (3')	Canare	15
27	VPC-004F, Video patch cables (4')	Canare	10
29	CAT6 patch cable, 2'		20
30	CAT6 patch cable, 3'		20
31	CAT6 patch cable, 4'		10
32	Fiber - duplex LC patch cable, 2'		10
33	Fiber - duplex LC patch cable, 3'		10
34	Fiber - duplex LC patch cable, 4'		5

Assistive Listening System ERJ:

Item #	Description	Manufacture
1	C747 V11, Monitor Microphone	AKG
2	TPS-II, Monitor Microphone preamplifier	ART
3	2M Microphone Mount, Monitor Mic Clamp	Cardellini Products
4	LT-800, FM Transmitter	Listen Tech
5	LA-326, Transmitter Rack Mount	Listen Tech
6	LA-123, Universal Remote Antenna Kit	Listen Tech
7	LR-500, Multi-channel FM receiver (wide-band) x 19	Listen Tech
8	LA-362, Receiver NiMH Rechargeable Batteries (2 AA) x19	Listen Tech
9	LA-165, Headset w/ Sanitary Cover x 19	Listen Tech
10	LA-166, Induction Neckloop x 5	Listen Tech
11	LA-325-01, Receiver Charging Case (16 unit)	Listen Tech

Shared Loose AV Equipment w/ Arthur Laurents Theater:

Item #	Description	Manufacture	Quantity
1	MS-10B, Straight microphone stand	Atlas	10
2	KM-201A/2BLK, Tripod microphone stand	AKG	10
3	KM-259/2BLK, Short floor stand	AKG	6
4	KM-211/2BLK, Boom Arm	AKG	16
5	TS-90B, Loudspeaker Stand	Ultimate Support	4
6	ASF20045, Utility Loudspeaker Stand Adapter	Martin Audio	4
7	SM58-LC, Dynamic Hand Held	Shure	8
8	SM58-S, Dynamic Hand Held with Switch	Shure	4
9	SM57-LC, Dynamic Instrument Microphone (misc)	Shure	8
10	MD421- II, Dynamic Instrument Microphone (Brass, Toms)	Sennheiser	4
11	BETA 52A, Dynamic Kick Drum Microphone	Shure	2
12	RE20, Dynamic Variable-D Microphone (Voiceovers, Misc)	Electro-Voice	4
13	C 414 XLS Matched Pair, Large Diaphragm Condenser Microphone Stereo Pair	AKG	2
14	SM81-LC, Small Diaphragm Condense	Shure	4
15	Beta 98/S, Small instrument	Shure	2
16	C747 V11, Small Shotgun	AKG	2
17	JDI-MK3, Active Direct Box (Bass, Acoustic Guitar)	Radial	4
18	ProD2, Passive Stereo Direct Box (Keys)	Radial	2
19	UPJ-1P, 2-way Utility Loudspeaker	Meyer Sound	6
20	UPM-1P, 2-way Compact Loudspeaker	Meyer Sound	2
21	Hot-Spot PA5X140, Compact stand mounted monitor	Galaxy Audio	4
22	750-LFC, Effects Subwoofer (Dual 15")	Meyer Sound	2
23	MDR-7506, Headphones	Sony	4
24	MK410, Standard Mic / IC cable, 10'	Whirlwind	20
25	MK425, Standard Mic / IC cable, 25'	Whirlwind	20
26	MK450, Standard Mic / IC cable, 50'	Whirlwind	20
27	NL4 010, Speakon Cable, 10'	Whirlwind	4
29	NL4 025, Speakon Cable, 25'	Whirlwind	16
30	NL4 050, Speakon Cable, 50'	Whirlwind	4
31	NL4 100, Speakon Cable, 100'	Whirlwind	4
32	LPC2400-110, ¼" patch cords, 2'	Bittree	40
33	LPC3600-110, ¼" patch cords, 3'	Bittree	40
34	LPC4800-110, ¼" patch cords, 4'	Bittree	40
35	STM03, XLR Male -1/4" TRS Adapter Cable	Whirlwind	10
36	STF03, XLR Female – ¼" TRS Adapter Cable	Whirlwind	10
37	YX2F, XLR Male – Dual XLR Female Y-Cable	Whirlwind	4
38	YX2M, XLR Female – Dual XLR Male Y-Cable	Whirlwind	4
39	NA3FF, XLR Female Turnaround	Neutrik	4
40	NA3MM, XLR Male Turnaround	Neutrik	4
41	NA3MJ, XLR Male – ¼" TRS Female Adapter	Neutrik	4
42	NA3FJ, XLR Female - 1/4" TRS Female Adapter	Neutrik	4

43	NA3JJ, 1/4" TRS Female Extension Adapter	Neutrik	4
44	MST2XM06US, 1/8" TRS - Dual XLR Male Adapter Cable	Whirlwind	4
45	MST2TS06US, 1/8" TRS - Dual 1/4" TS Male Adapter Cable	Whirlwind	4
46	MSTR06, 1/8" TRS - Dual RCA Male Adapter Cable	Whirlwind	4
47	NA2MPMF, RCA Female to XLR Male Adapter	Neutrik	4
48	GPR-101, RCA Female to 1/4" TS Male Adapter, 2-Pack	Hosa	2
49	CRA-202, Dual RCA Male Cable, 6'	Hosa	4
50	SN-06, 1/4" Male TS Instrument Cable, 6'	Whirlwind	4
51	SN-10, 1/4" Male TS Instrument Cable, 10'	Whirlwind	4
52	SBCTLK01, E3 Tool Kit	Bittree	2
53	E3-Mult, E3 Mult	Bittree	4
54	CCA0196, E3 to blunt - 15'-0"	Bittree	20
55	Plot, Audio PatchBay Programmable Shunts	Bittree	2
56	VAC-010F, Video cables (BNC), 10'	Canare	15
57	VAC-025F, Video cables (BNC), 25'	Canare	5
58	VAC-025F, Video cables (BNC), 25'	Canare	20
59	VIC-050F, Video cables (BNC), 50'	Canare	10
60	VAC-003F, Video patch cables - BNC-BNC (3')	Canare	20
61	VPC-002F, Video patch cables (2')	Canare	15
62	VPC-003F, Video patch cables (3')	Canare	15
63	VPC-004F, Video patch cables (4')	Canare	10
64	CAT6 patch cable, 2'		20
65	CAT6 patch cable, 3'		20
66	CAT6 patch cable, 4'		10
67	Fiber - duplex LC patch cable, 2'		10
68	Fiber - duplex LC patch cable, 3'		10
69	Fiber - duplex LC patch cable, 4'		15
70	BDS95-8DS, IR Illuminator	Bosch	2
71	WVCP504, Program Camera, B/W	Panasonic	2
72	Variable focal length lens, 1/3", f/1.2, AI	Panasonic	2
73	Camera C-Clamp Mount		2

Stage Management Tech Table Equipment Information ERJ:

Item #	Description	Manufacture	Quantity
1	HRM-4X, Digital Partyline Intercom 4-channel remote station	Clear-Com HelixNet	1
2	110/340, Digital Partyline Intercom Gooseneck microphone	Clear-Com HelixNet	1
3	EC-4B-BLK, Paging station / program mute button control station	BSS	1
4	SS, Sliding rack shelf	Middle Atlantic	1
5	ATND8677, Microphone Stand with Dante	Audio Technica	1
6	ES915ML12, Condenser Gooseneck (god mic)	Audio Technica	1
7	RL-10-D, Racklight module	Littlite	1
8	Smart500RT1U, UPS	Tripplite	1
9	Roto Rack 8U, Portable Remote Station case (8U)	SKB	1
10	SmartView Duo, Dual 8" HD-SDI rackmount Video display	Blackmagic designs	1
11	Shallow Roto Rack, Portable Remote Station case (4U)	SKB	1
12	PD-920R-SP, Rack mount power strip w/ Surge Protection	Middle Atlantic	1

Backstage Information ERJ:

BOH Video Displays

Samsung, DC32E, 32" diagonal, landscape orientation w/ Blackmagic Designs Micro Converter SDI to HDMI, for interfacing video camera output to displays for video monitoring

Loading Dock Information ERJ:

There are two covered loading bays (48" Fixed Dock Height) each capable of serving a WB-57 semitrailer. Entrance to the stage area is via a 8'-0" wide x 10'-0" High overhead coiling door (a man door is also available). The dock and stage are at the same level

Arthur Laurents Theater

General Venue Information



Venue Type

Proscenium Theatre

38'x18'

Stage Floor

The stage floor is constructed of two layers of $\frac{3}{4}$ " plywood, installed on 2x4 sleepers on resilient isolators. Performance surface is $\frac{1}{4}$ " tempered hardboard

Balcony with Balcony Rail Position

Seating

Total Capacity 255

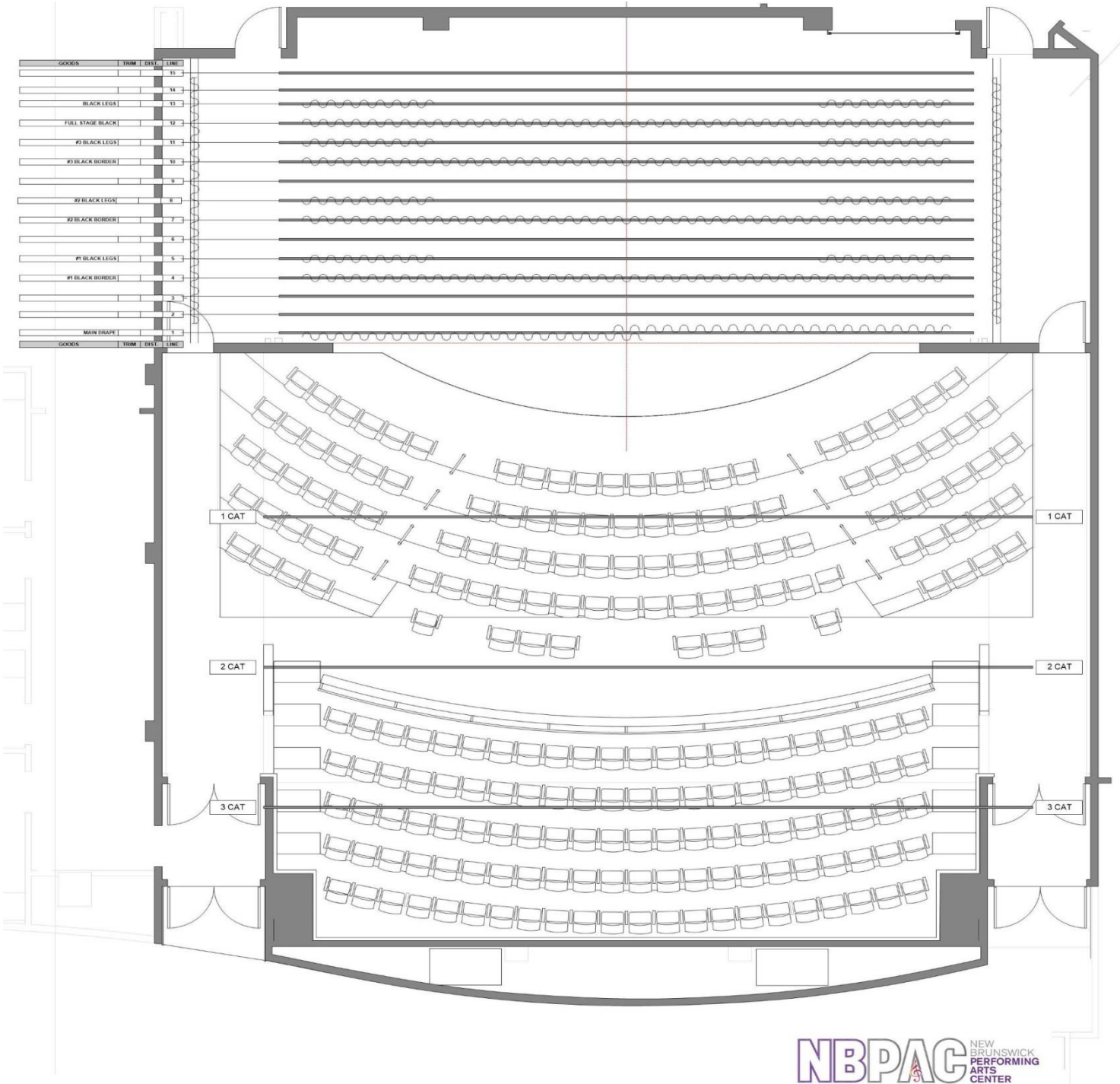
Orchestra 222

(Of which 7 are removable for wheelchair accessibility)

Balcony 33

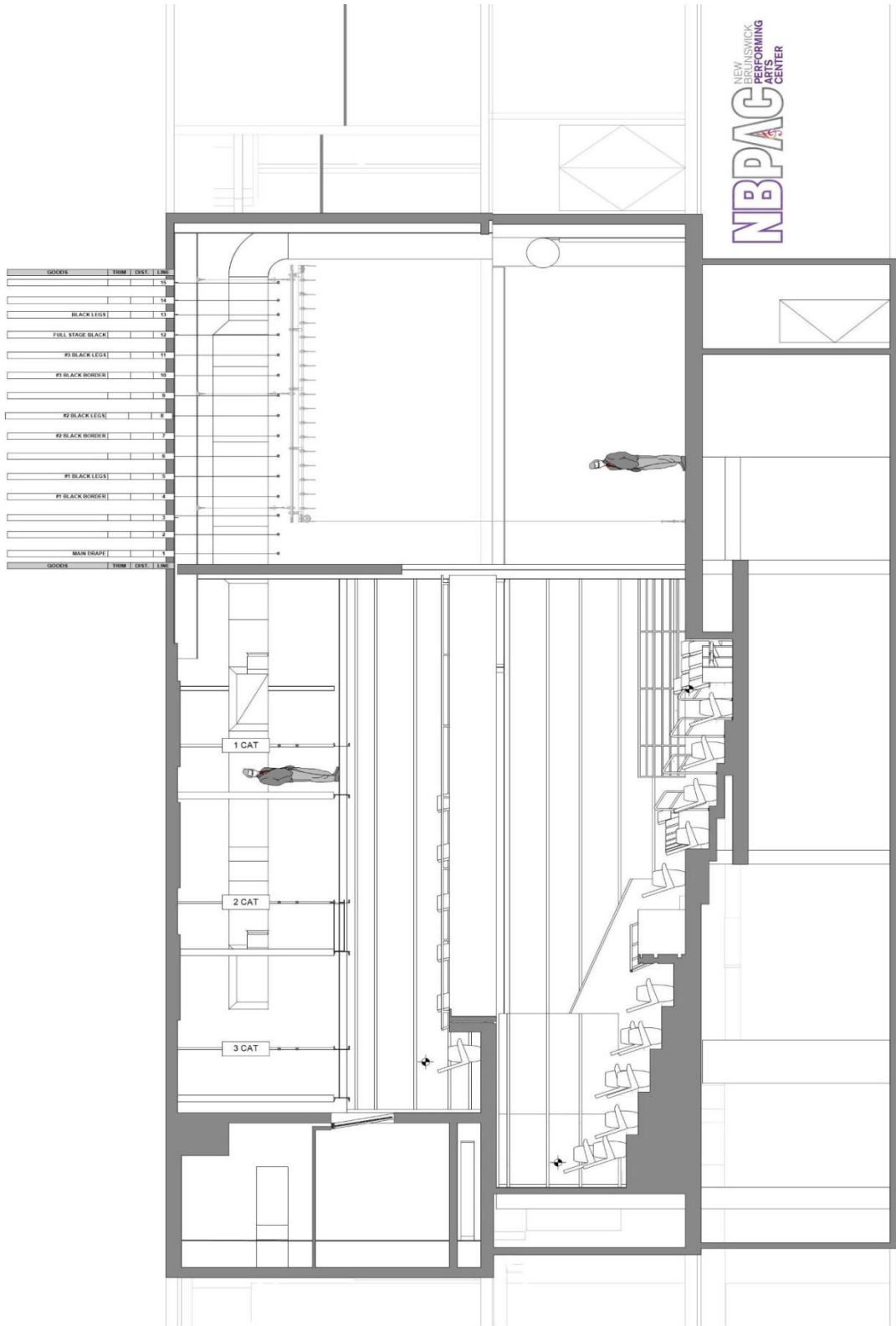
(Of which 2 are removable for wheelchair accessibility)

Plan View AL



NBPAC NEW BRUNSWICK PERFORMING ARTS CENTER

Section View AL



Stage Dimensions AL

Proscenium	
Width	38'-00"
Height	18'-00"
Stage	
Height above audience level	3'-00"
Depth from apron to back wall	29'-00"
Plaster line to back wall	23'-10"
Apron edge to plaster line	5'-2"
CL to SR wall/flyrail	27'-9"
CL to SL wall/flyrail	30'-00"
Wings	
SR proscenium edge to SR side wall/flyrail	8'-7"
SL proscenium edge to SL side wall/flyrail	10'-11"
Total stage width, wing to wing	57'-9"
Auditorium	
Apron to booth	32'-00"
Apron to balcony rail	26'-9"

Lineset Schedule AL:

15 linesets, 9" spacing, 1,075# load capacity (motorized rigging). 42'-0" long battens (1 ½" Schedule 40)

Lineset #	Distance	Wgt. lbs	Length	Rigging Type	Rep. Usage
1	0'-9"	1200	42'-00"	POWERLIFT P1212R	Traveler Track w/Main Drape
2	2'-1"	1200	42'-00"	POWERLIFT P1212R	
3	3'-5"	1200	42'-00"	POWERLIFT P1212R	Front Projection Screen
4	4'-9"	1200	42'-00"	POWERLIFT P1212R	Black Border
5	6'-2"	1200	42'-00"	POWERLIFT P1212R	Black Legs
6	7'-7"	1200	42'-00"	POWERLIFT P1212R	
7	9'-0"	1200	42'-00"	POWERLIFT P1212R	Black Border
8	10'-5"	1200	42'-00"	POWERLIFT P1212R	Black Legs
9	11'-10"	1200	42'-00"	POWERLIFT P1212R	
10	13'-3"	1200	42'-00"	POWERLIFT P1212R	Black Border
11	14'-8"	1200	42'-00"	POWERLIFT P1212R	Black Legs
12	16'-1"	1200	42'-00"	POWERLIFT P1212R	Black Border
13	17'-6"	1200	42'-00"	POWERLIFT P1212R	Black Legs
14	18'-6"	1200	42'-00"	POWERLIFT P1212R	Scrim
15	19'-9"	1200	42'-00"	POWERLIFT P1212R	Cyclorama
Dead Hung	22'-3"	1200	42'-00"	POWERLIFT P1212R	Bonce
SL Tab	-	500	18'-00"	Dead Hung	Single Track Traveler w/Black Tabs
SR Tab	-	500	18'-00"	Dead Hung	Single Track Traveler w/Black Tabs

Soft Goods and Draperies AL:

2 Main drape – IFR 25 oz Prestige 75% fullness

4 Border and 8 leg curtains (9" spacing typ.) – Virtue 21 oz

1 Scrim – White Muslin

1 Cyclorama – Twin White

3ea Stage Left / Stage Right Side Tab (dead hung) – IFR 22 oz. Encore

Lighting and Electrics Information AL:

Lighting Control Console:

Gio 24k

- 4,096 or 24,576 outputs with no co-processing.
- Dedicated master-playback fader pair
- 10 definable motorized faders, with 100 pages of control
- 8 user-definable buttons
- Four pageable haptic encoders
- Two integral articulating 12.1" LCD multi-touch displays.
- Supports 3 external high resolution Display Port monitors; can be single- or multi-touch
- Three user-definable workspaces per monitor, each with discrete split-screen controls and frame management. Additionally, single- or multiple-screen snapshots allow instant reconfiguration.
- Custom-design your control interface using Magic Sheets, with topographical or abstract layouts. Full interaction with the command line allows command instructions - from the simplest and most immediate to the most complex - accessed from a mouse or single- or multi-touch displays.
- Configure and program pixel-map layouts, using integral or custom-designed content.
- Device discovery and troubleshooting via RDM
- ETC Sensor® CEM+, CEM3™ and FDX dimmer feedback and controls
- ETCNet3™ (ACN- based), ETCNet2™, Artnet and Avab® UDP protocol output
- External Backlit alpha-numeric keyboard
- Multiple MIDI and SMPTE Inputs
- OSC and UDP Transmit and Receive
- Client/server networking and synchronized backup
- Client and Offline programming on PC (Windows 7 or higher) and native on Macintosh (El Capitan v10.11 or later), via Nomad™
- Data-laundering from Obsession™, Express™, Expression®, Emphasis®, Congo®, Cobalt™, Transtechnik NT, Avab VLC, Grand MA1, Grand MA2 and Strand 500/300 series show files.
- 99 discrete online users with partitioned control

Dimming Control:

Sensor3 Power Control system

384 Dimmers @ 2.4kW Thru-Power Modules, 24 @ 20A 120V controlled breakers; 24 @ 20A 208V controlled breakers, network data infrastructure, architectural lighting control with power and DMX control for LED house lights. Power distributed to stage, over stage, and catwalk lighting positions through a network of receptacles in custom enclosures.

Work lighting system for cleaning and set up – controlled by relays in the theatrical distribution system.

Lighting Instrument Inventory AL:

Item #	Description	Manufacture	Quantity
1	19 Degree Ellipsoidal, 120v/750W	ETC	50
2	26 Degree Ellipsoidal, 120v/750W	ETC	40
3	36 Degree Ellipsoidal, 120v/750W	ETC	40
4	50 Degree Ellipsoidal, 120v/750W	ETC	20
5	Source-4 Par 120v/575W w/complete Lens Kit	ETC	10
6	Followspot Medium Throw, 400W HTI	Lycian	1
7	Desire D60XTI Vivid, LED Wash Fixture, Color Mixing, x7 color system LED array	ETC	24
8	Chroma-Q Color Force II, Cyclorama Striplight, Color Mixing, 72", RGBA	Chroma-Q	10
9	High End SolaFrame 1000 CRI Automated Framing Fixture	ETC	6

Lighting Accessories Inventory AL:

Item #	Description	Manufacture	Quantity
1	Sidearm 18" Single Tee	Altman	30
2	Spare C-Clamps	ETC	10
3	Scenery Bumper	Altman	6
4	Top hats for 6.25" equipment	City Theatrical	20
5	4-Leaf Barndoor for Wash Fixture	ETC	20
6	Drop In Iris	ETC	10
7	Pattern holders for Ellipsoidal	ETC	30
8	Donut for 19-50 deg.	ETC/ City Theatrical	30
9	Spare Safety Cables (32")	ETC / Fehr Brothers	30
10	Spare 19-50 Degree Color Frame (6.25")	ETC/ City Theatrical	30
11	Spare 2P&G Connectors		10
12	18'-0" x 1-1/2" dia. (nom.) steel pipe schedule 40		6
13	Tie-Off Boom Cap for 1-1/2" dia. (nom.) pipe		6
14	50lb stationary lighting base	Altman	6
15	Heat Shield Border, 1'-6"H x 10'-0"W		8

Power Cable - Stage Pin Inventory AL:

Item #	Description	Manufacture	Quantity
1	Jumper cable - 20 amp - 5'		20
2	Jumper cable - 20 amp - 10'		20
3	Jumper cable - 20 amp - 25'		20
4	Jumper cable - 20 amp - 50'		5
5	Twofer - 20 amp (molded)		20
6	Adapter - Male 20A Stage Pin to Female 20A Edison		10
7	Multi-cable extension - 6 circ - 10' (12ga 14con)		5
8	Multi-cable extension - 6 circ - 25' (12ga 14con)		10
9	Multi-cable extension - 6 circ - 50' (12ga 14con)		20
10	Male Veam to Female Stage Pin Fan Out		30

Power Cable - L6-20 AL:

Item #	Description	Manufacture	Quantity
1	Jumper cable - 20 amp - 10'		10
2	Jumper cable - 20 amp - 25'		10
3	Jumper cable - 20 amp - 50'		5

Power Cable – Edison AL:

Item #	Description	Manufacture	Quantity
1	Jumper cable - 20 amp - 5'		10
2	Jumper cable - 20 amp - 10'		10
3	Jumper cable - 20 amp - 25'		10
4	Jumper cable - 20 amp - 50'		10

Power Cable - PowerCON AL:

Item #	Description	Manufacture	Quantity
1	Jumper cable - 20 amp - 5'		5
2	Jumper cable - 20 amp - 10'		20
3	Jumper cable - 20 amp - 25'		10

Control Cable Inventory AL:

Item #	Description	Manufacture	Quantity
1	Network Cable - 5'		5
2	Network Cable - 10'		10
3	Network Cable - 25'		20
5	DMX Cable - 5'		10
6	DMX Cable - 10'		20
7	DMX Cable - 25'		20
8	DMX Terminator		5

Sound and Communications Information AL:

Digital Mixing Console:

Yamaha QL5

w/ Yamaha Rio3224-D, Digital Mixing Console stagebox, 32-in x 16-out + 4 AES Out

In Control Room rack. Routes analog audio lines from theatre connection panels to console via Dante network

32 + 2 fader configuration adapts to a wide range of channel layouts.

- Mix channels: 64 mono, 8 stereo.
- Busses: 16 mix, 8 matrix (Input to Matrix supported).
- Local I/O: 32 in, 16 out.
- Fader configuration: 32 + 2 (Master).
- Stainless steel iPad support stay

Sound Playback AL:

Item #	Description	Manufacture
1	Mac Mini Sound Playback Computer	Apple Mac Mini
2	EXT-DVIKVM-LANTX, DVI KVM over IP TX	Gefen
3	Qlab 3 Pro Bundle, Sound Playback Software	Figure53
4	Dante Digital Networking Virtual Soundcard Software, Installed on Qlab Mac Mini	Audinate
5	Dante, Sound Digital Networking Control Software, Installed on general purpose computer	Audinate
6	MIDISport, MIDI Interface for Qlab Mac Mini	M-Audio
7	LaCie, External Hard Drive for Mac Mini	LaCie
8	88 C06 Dante, Patch Panel Power Amplifier, 8-channel, 750W	Linea Research
9	SS-CDR200, Solid-state / CD recorder / player	Tascam
10	IF-DA2, Solid-state / CD recorder / player Dante interface	Tascam
11	OR2200PFCRT2U, UPS/Power distribution for rack	CyberPower

Digital Signal Processing AL:

Item #	Description	Manufacture	Quantity
1	Galileo Galaxy 816, Digital audio signal processing system	Meyer Sound	1
2	MPS-488, Digital audio signal processing power supply	Meyer Sound	1
3	BLU-806, Digital Signal Processor	BSS	1
4	BLUCARD-IN, Digital Signal Processor - Analog Input Card	BSS	2
5	BLUCARD-OUT, Digital Signal Processor - Analog Output Card	BSS	2
6	BLU-BOB1, Digital Signal Processor analog output box	BSS	1
7	CP825AVRLCD, Uninterruptable Power Supply	CyberPower	1
8	PL-8, Racklight module	Furman	1
9	GRR-10L-10U, Rolling Rack	Gator Cases	1

General Purpose Programming & Control AL:

Item #	Description	Manufacture
1	General Purpose Programming & Control Computer, Windows 10 Professional, Intel i7 3.0 GHz, 8GB RAM, 500GB SSD	Custom
2	EXT-DVIKVM-LANTX, DVI KVM over IP TX	Gefen
3	EXT-DVIKVM-LANRX, DVI KVM over IP RX	Gefen
4	B48DC-FNPITE3M20U7L, Mic / Line Level Patch Panel (1/4" TRS)	Bittree
5	SR-40-22, Swing out equipment rack	Middle Atlantic
6	UD3, Rack Drawer (3U)	Middle Atlantic
7	VT series, Rack vent panels	Middle Atlantic
8	HBL series, Rack blank panels	Middle Atlantic
9	OR2200PFCRT2U, UPS/Power distribution for rack	CyberPower

Wireless Microphone System AL:

Item #	Description	Manufacture	Quantity
1	ULXD4Q, 4-channel digital wireless microphone receiver	Shure	2
2	ULXD1, Bodypack wireless microphone transmitter	Shure	8
3	E6 Omni, Earloop Miniature Microphone, Beige	Countryman	8
4	B3 Omni, Lavalier Miniature Microphone, Beige	Countryman	8
5	ULXD2 / B87A, Handheld wireless microphone transmitter	Shure	4
6	UA874, Active Directional Antenna w/ 2x antenna coax cable 25'	Shure	2
7	CP825AVRLCD, Uninterruptable Power Supply	CyberPower	1
8	PL-8, Racklight module	Furman	1
9	GRR-10L-10U, Rolling Rack	Gator Cases	1

Installed Loudspeakers AL:

Item #	Description	Manufacture	Quantity
1	UPQ-1P, Stage left / stage right speaker - top	Meyer Sound	2
2	UPJ-1P, Stage left / stage right speaker - bottom	Meyer Sound	2
3	750-LFC, Stage left / stage right subwoofers (portable)	Meyer Sound	2
4	UPJ-1P, Center cluster - top	Meyer Sound	2
5	UPJunior, Center cluster - top	Meyer Sound	2
6	UP-4XP, Front fills	Meyer Sound	4
7	UPM-1P, Side effects / surround speakers (portable)	Meyer Sound	9

Communication System AL:

Item #	Description	Manufacture	Quantity
1	HMS-4X, Digital Partyline Intercom 4-channel base station	Clear-Com HelixNet	1
2	HLI-2W2, Digital Partyline Intercom wireless / 2-wire interface module	Clear-Com HelixNet	1
3	HLI-ET2, Digital Partyline Intercom Ethernet Linking module	Clear-Com HelixNet	1
4	HLI-FBS, Digital Partyline Intercom Fiber Optic Linking module	Clear-Com HelixNet	1
5	JPS60A-24, Cat-6A Patch Panel, for shielded CAT6A cable, 24-port frame	Black Box	2
6	FMS300, Cat-6A Patch Panel, shielded CAT6A jack	Black Box	48
7	6AS10-3L, Cat-6A Patch Cable, shielded	Leviton	20
8	HKB-2X, Digital Partyline Intercom speaker station	Clear-Com HelixNet	2
9	HXII-BP-X4, Digital Partyline Intercom beltpack	Clear-Com HelixNet	8
10	CC-40, Digital Partyline Intercom headset	Clear-Com	8
11	HS-6, Digital Partyline Intercom handset	Clear-Com	2
12	FreeSpeak II-Base-5, Wireless Intercom Base Station, 1.9GHz	Clear-Com	1
13	FreeSpeak II Beltpack, Wireless Intercom Beltpack Transceiver, 1.9GHz	Clear-Com	5
14	FSII-TVCR-19-US, Wireless Intercom Antenna Transceiver, 1.9GHz	Clear-Com	5
15	FSII-SPL, Wireless Intercom Antenna Splitter, 1.9GHz	Clear-Com	2
16	WS-C2960X-24PS-L, Ethernet Gbit managed Switch - 24 Port w/ 4 SFP slots and PoE+	Cisco	4

Production Video Systems & Projection Accommodation AL:

Item #	Description	Manufacture	Quantity
1	AW-HE130, Program Camera, Color, (fixed stage view)	Panasonic	1
2	Variable focal length lens, 1/3", f/1.2, AI (stage view)	Fujinon / Canon	1
3	WVCP504, Production Camera, Infrared (fixed stage view)	Panasonic	1
4	Variable focal length lens, 1/3", f/1.2, AI (stage view)	Fujinon / Canon	1
5	CSI-IR50m60, Infrared illuminator, LED, 55W	Cantronic	1
6	631-0025, Bracket with under mount assembly	Cantronic	1
7	DELV-2LCD7-3GHD, Dual 7-inch Rackmount Video Monitor	Delvcam	1
8	DELV-3GHD-17RM, 17.3 inch High Resolution 3G-SDI-HDMI Rackmount KVM Monitor	Delvcam	1
9	Smart Videohub 40x40, 40x40 HD/SDI Video Matrix	Blackmagic Designs	1
10	Mini Converter SDI to HDMI, HD/SDI to HDMI converter	Blackmagic Designs	4
11	Monarch LCS, Video recording / streaming appliance	Matrox	1
12	DTP-HDMI-330-Tx, Long distance HDMI over CAT6 - transmit	Extron	4
13	DTP-HDMI-330-RTx, Long distance HDMI over CAT6 - receive	Extron	4
14	FOXBOX Tx HDMI MM, Long distance HDMI over MM Fiber - transmit	Extron	2
15	FOXBOX SR HDMI MM, Long distance HDMI over MM Fiber - scaling receiver	Extron	2
16	DM55E, FOH Displays, 55" diagonal, landscape orientation, some dedicated to late seating video display	Samsung	4
17	Micro Converter SDI to HDMI, HD/SDI to HDMI converter, for interfacing video camera output to displays for latecomer video monitoring	Blackmagic Designs	4

Program Monitor / Paging / Audience Recall System AL:

Item #	Description	Manufacture
1	BLU-806, Digital Signal Processor	BSS
2	BLUCARD-IN, Digital Signal Processor - Analog Input Card	BSS
3	BLUCARD-OUT, Digital Signal Processor - Analog Output Card	BSS
4	BLU-BOB1, Digital Signal Processor analog output box	BSS
5	BLU-BIB1, Digital Signal Processor analog input box	BSS
6	44 C10, Networked amplifier, for BOH / FOH 70V Ceiling / Wall Loudspeakers	Linea Research
7	MP-1216, Amplified Monitor Panel	TOA
8	CMS-501DC, 70V Loudspeaker, Ceiling Mount, front of house lobbies, flush mount	Tannoy
9	Ctrl 26CT, 70V Loudspeaker, Ceiling Mount, back of house, flush mount	JBL
10	Ctrl 26-DT 70V Loudspeaker, Ceiling Mount, back of house, surface mount	JBL

Racks, Systems & Networking AL:

Item #	Description	Manufacture	Quantity
1	MRK-4431, Equipment racks & accessories	Middle Atlantic	
2	VT series, Rack vent panels	Middle Atlantic	
3	HBL series, Rack blank panels	Middle Atlantic	
4	UD3, k Drawer (3U)	Middle Atlantic	
5	B48DC-FNPITE3M20U7L, Mic / Line Level Patch Panel (1/4" TRS)	Bittree	
6	Universal Bulkhead, Loudspeaker Patch Panel, Populated with Neutrik Speakon connectors	AVP	
7	261U-DVJAW, Video patch panels	Canare	
8	SYSTIMAX (Copper), RJ45 Patchbays - Cat 6a Shielded	Commscope	
9	FEUR24LCM, Fiber Patch Panel, w/ Leviton 481RU-HFO 1RU front cable management	Hubbell	
10	WS-C2960X-24PS-L, Ethernet Gbit managed Switch - 24 Port w/ 4 SFP slots and PoE+	Cisco	3
11	System Control/Programming general purpose computer - Windows 10, minimum specs: Intel i7 3.0 GHz, 8GB RAM, 500GB SSD. Computer pre-loaded with ALL programming/control software for equipment used within Rack Rooms.	Custom	1
12	SMK-520S19, Slide-Out Rack Display/Keyboard	CMS	1
13	N-Port 5610, Serial to IP converter - 8 port	Moxa	1
14	OR2200PFCRT2U, UPS/Power distribution for rack	CyberPower	1
15	DA208, Dual 1x4 Audio DA	ATI Audio	1
16	MK425, Standard Mic / IC cable, 25'	Whirlwind	20
17	LPC2400-110, 1/4" patch cords, 2'	Bittree	40
18	LPC3600-110, 1/4" patch cords, 3'	Bittree	40
19	LPC4800-110, 1/4" patch cords, 4'	Bittree	10
20	SBCTLK01, E3 Tool Kit	Bittree	1
21	E3-Mult, E3 Mult	Bittree	4
22	CCA0196, E3 to blunt - 15'-0"	Bittree	20
23	Plot, Audio PatchBay Programmable Shunts	Bittree	2
24	VAC-025F, Video cables (BNC), 25'	Canare	5
25	VPC-002F, Video patch cables (2')	Canare	15
26	VPC-003F, Video patch cables (3')	Canare	15
27	VPC-004F, Video patch cables (4')	Canare	10
29	CAT6 patch cable, 2'		20
30	CAT6 patch cable, 3'		20
31	CAT6 patch cable, 4'		10
32	Fiber - duplex LC patch cable, 2'		10
33	Fiber - duplex LC patch cable, 3'		10
34	Fiber - duplex LC patch cable, 4'		5

Assistive Listening System AL:

Item #	Description	Manufacture
1	C747 V11, Monitor Microphone	AKG
2	TPS-II, Monitor Microphone preamplifier	ART
3	2M Microphone Mount, Monitor Mic Clamp	Cardellini Products
4	LT-800, FM Transmitter	Listen Tech
5	LA-326, Transmitter Rack Mount	Listen Tech
6	LA-123, Universal Remote Antenna Kit	Listen Tech
7	LR-500, Multi-channel FM receiver (wide-band) x 10	Listen Tech
8	LA-362, Receiver NiMH Rechargeable Batteries (2 AA) x10	Listen Tech
9	LA-165, Headset w/ Sanitary Cover x 10	Listen Tech
10	LA-166, Induction Neckloop x 3	Listen Tech
11	LA-325-01, Receiver Charging Case (16 unit)	Listen Tech

Shared Loose AV Equipment w/ Elizabeth Ross Johnson Theater:

Item #	Description	Manufacture	Quantity
1	MS-10B, Straight microphone stand	Atlas	10
2	KM-201A/2BLK, Tripod microphone stand	AKG	10
3	KM-259/2BLK, Short floor stand	AKG	6
4	KM-211/2BLK, Boom Arm	AKG	16
5	TS-90B, Loudspeaker Stand	Ultimate Support	4
6	ASF20045, Utility Loudspeaker Stand Adapter	Martin Audio	4
7	SM58-LC, Dynamic Hand Held	Shure	8
8	SM58-S, Dynamic Hand Held with Switch	Shure	4
9	SM57-LC, Dynamic Instrument Microphone (misc)	Shure	8
10	MD421- II, Dynamic Instrument Microphone (Brass, Toms)	Sennheiser	4
11	BETA 52A, Dynamic Kick Drum Microphone	Shure	2
12	RE20, Dynamic Variable-D Microphone (Voiceovers, Misc)	Electro-Voice	4
13	C 414 XLS Matched Pair, Large Diaphragm Condenser Microphone Stereo Pair	AKG	2
14	SM81-LC, Small Diaphragm Condense	Shure	4
15	Beta 98/S, Small instrument	Shure	2
16	C747 V11, Small Shotgun	AKG	2
17	JDI-MK3, Active Direct Box (Bass, Acoustic Guitar)	Radial	4
18	ProD2, Passive Stereo Direct Box (Keys)	Radial	2
19	UPJ-1P, 2-way Utility Loudspeaker	Meyer Sound	6
20	UPM-1P, 2-way Compact Loudspeaker	Meyer Sound	2
21	Hot-Spot PA5X140, Compact stand mounted monitor	Galaxy Audio	4
22	750-LFC, Effects Subwoofer (Dual 15")	Meyer Sound	2
23	MDR-7506, Headphones	Sony	4
24	MK410, Standard Mic / IC cable, 10'	Whirlwind	20
25	MK425, Standard Mic / IC cable, 25'	Whirlwind	20
26	MK450, Standard Mic / IC cable, 50'	Whirlwind	20
27	NL4 010, Speakon Cable, 10'	Whirlwind	4
29	NL4 025, Speakon Cable, 25'	Whirlwind	16
30	NL4 050, Speakon Cable, 50'	Whirlwind	4
31	NL4 100, Speakon Cable, 100'	Whirlwind	4
32	LPC2400-110, 1/4" patch cords, 2'	Bittree	40
33	LPC3600-110, 1/4" patch cords, 3'	Bittree	40
34	LPC4800-110, 1/4" patch cords, 4'	Bittree	40
35	STM03, XLR Male -1/4" TRS Adapter Cable	Whirlwind	10
36	STF03, XLR Female - 1/4" TRS Adapter Cable	Whirlwind	10
37	YX2F, XLR Male - Dual XLR Female Y-Cable	Whirlwind	4
38	YX2M, XLR Female - Dual XLR Male Y-Cable	Whirlwind	4
39	NA3FF, XLR Female Turnaround	Neutrik	4
40	NA3MM, XLR Male Turnaround	Neutrik	4
41	NA3MJ, XLR Male - 1/4" TRS Female Adapter	Neutrik	4

42	NA3FJ, XLR Female - 1/4" TRS Female Adapter	Neutrik	4
43	NA3JJ, /4" TRS Female Extension Adapter	Neutrik	4
44	MST2XM06US, 1/8" TRS - Dual XLR Male Adapter Cable	Whirlwind	4
45	MST2TS06US, 1/8" TRS - Dual 1/4" TS Male Adapter Cable	Whirlwind	4
46	MSTR06, 1/8" TRS - Dual RCA Male Adapter Cable	Whirlwind	4
47	NA2MPMF, RCA Female to XLR Male Adapter	Neutrik	4
48	GPR-101, RCA Female to 1/4" TS Male Adapter, 2-Pack	Hosa	2
49	CRA-202, Dual RCA Male Cable, 6'	Hosa	4
50	SN-06, 1/4" Male TS Instrument Cable, 6'	Whirlwind	4
51	SN-10, 1/4" Male TS Instrument Cable, 10'	Whirlwind	4
52	SBCTLK01, E3 Tool Kit	Bittree	2
53	E3-Mult, E3 Mult	Bittree	4
54	CCA0196, E3 to blunt - 15'-0"	Bittree	20
55	Plot, Audio PatchBay Programmable Shunts	Bittree	2
56	VAC-010F, Video cables (BNC), 10'	Canare	15
57	VAC-025F, Video cables (BNC), 25'	Canare	5
58	VAC-025F, Video cables (BNC), 25'	Canare	20
59	VIC-050F, Video cables (BNC), 50'	Canare	10
60	VAC-003F, Video patch cables - BNC-BNC (3')	Canare	20
61	VPC-002F, Video patch cables (2')	Canare	15
62	VPC-003F, Video patch cables (3')	Canare	15
63	VPC-004F, Video patch cables (4')	Canare	10
64	CAT6 patch cable, 2'		20
65	CAT6 patch cable, 3'		20
66	CAT6 patch cable, 4'		10
67	Fiber - duplex LC patch cable, 2'		10
68	Fiber - duplex LC patch cable, 3'		10
69	Fiber - duplex LC patch cable, 4'		15
70	BDS95-8DS, IR Illuminator	Bosch	2
71	WVCP504, Program Camera, B/W	Panasonic	2
72	Variable focal length lens, 1/3", f/1.2, AI	Panasonic	2
73	Camera C-Clamp Mount		2

Stage Management Tech Table Equipment Information AL:

Item #	Description	Manufacture	Quantity
1	HRM-4X, Digital Partyline Intercom 4-channel remote station	Clear-Com HelixNet	1
2	110/340, Digital Partyline Intercom Gooseneck microphone	Clear-Com HelixNet	1
3	EC-4B-BLK, Paging station / program mute button control station	BSS	1
4	SS, Sliding rack shelf	Middle Atlantic	1
5	ATND8677, Microphone Stand with Dante	Audio Technica	1
6	ES915ML12, Condenser Gooseneck (god mic)	Audio Technica	1
7	RL-10-D, Racklight module	Littlite	1
8	Smart500RT1U, UPS	Tripplite	1
9	Roto Rack 8U, Portable Remote Station case (8U)	SKB	1
10	SmartView Duo, Dual 8" HD-SDI rackmount Video display	Blackmagic designs	1
11	Shallow Roto Rack, Portable Remote Station case (4U)	SKB	1
12	PD-920R-SP, Rack mount power strip w/ Surge Protection	Middle Atlantic	1

Projector Information AL:

Projector Model and Specs

HIGHlite Laser 4K

11,000 ANSI / 12,500 ISO Lumens | Contrast Ratio: 2,000:1 | Part Number: 118-081



11,000 ANSI / 12,500 ISO Lumens | Contrast Ratio: 2,000:1 | Part Number: 118-081

Colour System:

3-chip DLP®

Display Type:

3 x 0.65" 1080p DMD™

DMD Specification:

Display capability up to 4K-UHD.

8.3 megapixels on screen at 4K-UHD (3840 x 2160).

Fast transit pixels for smooth greyscale and improved contrast.

Aspect Ratio:

16:9

Fill Factor

Not applicable: Smooth Picture DMD™

Key Features

Environmental

Sealed Optics

Filterless

Dust Resistant

Video & Graphics Processing

DisplayPort 1.2.

2 x HDMI 2.0.

HDBase-T.

3G-SDI with loop-through.

Scaling with aspect ratio management for a wide range of sources.

DICOM simulation mode.

Geometry Correction

Cornerstone, Vertical & Horizontal Keystone, Pincushion & Barrel, Arc and Image Rotation.
Non-linear warp.
Digital zoom, pan and scan.
Blanking control for custom input window sizing.
Scaling available for fixed aspect ratio screens.
Unscaled processing for pixel mapped display.

Edge Blending

Blending control available for all sides with width control.
Correction for non-active pixels at the edge of the display.

Picture in Picture

Two sources can be displayed simultaneously using 2D inputs: either picture in picture (PIP), or side by side (PBP), with original aspect ratios maintained.

HDBaseT® Interface

Built in support for reception of uncompressed High Definition Video over standard CAT5e/6 LAN cable.
Allows the projector to be placed up to 100m from the source with low cost cabling.
Supports up to 4K UHD 3840x2160 @ 60Hz (4:2:0) / 8-bit
3840x2160 @ 30Hz (4:4:4) / 8-bit
3840x2160 @ 30Hz (4:2:2) / 12-bit

Colour Processing

Four colour modes available.
Powerful seven point colour correction for accurate colour matching with presets.
Easy colour temperature selection.
Manual seven point colour adjustment.
Traditional lifts and gains.

Projector Controller Software

Intuitive user interface for network control.
Simultaneous control of user-defined groups of projectors.
At-a-glance monitoring of projector status.

Projector Automation

Real-time clock provides daily on/off automation.
E-mail alerts for system status.

Source Compatibility:

2D graphics standards up to 4K-UHD 3840 x 2160 resolution at 60Hz via HDMI 2.0, HDBaseT (4:2:0) and DisplayPort inputs. 3GSDI is SMPTE 292M, SMPTE 259M-C and SMPTE 424M compliant upto 1080p.

Inputs/Outputs

Video & Computer

Type	Connector	Qty
DisplayPort 1.2	DisplayPort	1
HDMI 2.0	HDMI	2
3G-SDI In	BNC	1
3G-SDI Out	BNC	1
HDBaseT/LAN	LAN RJ45	1

Communication & Control

Type	Connector	Qty
LAN	RJ45	1
RS232	9-pin D Sub	1
Wired Remote	3.5mm Stereo Jack	1
12V Trigger	3.5mm Stereo Jack	2

3D Formats Supported

Not applicable

HDTV Formats Supported

1080p (24Hz, 25Hz, 30Hz, 50Hz, 60Hz)
1080i (50Hz, 60Hz)
720p (50Hz, 60Hz)
2K (24Hz, 25Hz, 30Hz, 50Hz, 60Hz)
4K-UHD (24Hz, 25Hz, 30Hz, 50Hz, 60Hz)

Computer Compatibility

2D
4K-UHD up to 60Hz

Bandwidth

498 Megapixels per second via DisplayPort and HDMI 2.0.

Remote Control

Addressable IR remote control, wireless and wired.
On-Board keypad.

Automation Control

Crestron Room View® Connected
PJ Link Class 1
LAN
RS232
AMX (Device Discovery)
Served web pages (Projector status, Projector control, Crestron RoomView®, Network settings, Alert mail setup, Time setup, Error log, On screen Display)

Colour Temperature

3200K to 9300K

Operation



Illumination Type

Laser Light Source

Typical illumination Life

20,000 hours

Lenses

Lens	Part No.	Optimised Focus Range*	Lens Shift
0.77 : 1 fixed HB	110-808	1.3m - 15.0m	Vert: 0.38 (U) 0.38 (D) frame, Hor: 0.16 (L) 0.16 (R) frame
1.16 : 1 fixed HB	110-809	1.4m - 25.0m	Vert: 0.38 (U) 0.38 (D) frame, Hor: 0.16 (L) 0.16 (R) frame
1.45 - 1.74 : 1 zoom HB	110-803	1.8m - 9.3m	Vert: 0.5 (U) 0.5 (D) frame, Hor: 0.16 (L) 0.16 (R) frame
1.74 - 2.17 : 1 zoom HB	112-878	2.2m - 11.8m	Vert: 0.5 (U) 0.5 (D) frame, Hor: 0.16 (L) 0.16 (R) frame
2.17 - 2.90 : 1 zoom HB	113-852	2.7m - 15.4m	Vert: 0.5 (U) 0.5 (D) frame, Hor: 0.16 (L) 0.16 (R) frame
2.90 - 4.34 : 1 zoom HB	110-806	3.6m - 22.5m	Vert: 0.5 (U) 0.5 (D) frame, Hor: 0.16 (L) 0.16 (R) frame
4.34 - 6.76 : 1 zoom HB	110-807	5.5m - 35m	Vert: 0.5 (U) 0.5 (D) frame, Hor: 0.16 (L) 0.16 (R) frame

* Lens focal ranges above are the optimised distances but are likely to focus further, please contact your RSM for more details. Lens ratio tolerances: E-Vision Series: +/-3%. HighLite Series: +/- 5%. M-Vision Series: +/- 2%. Titan Series: +/-2%

Lens Mount

Motorised and programmable shift, zoom and focus.

Intelligent Lens Memory with 10 user-definable preset positions (on selected lenses).

Mechanical Mounting

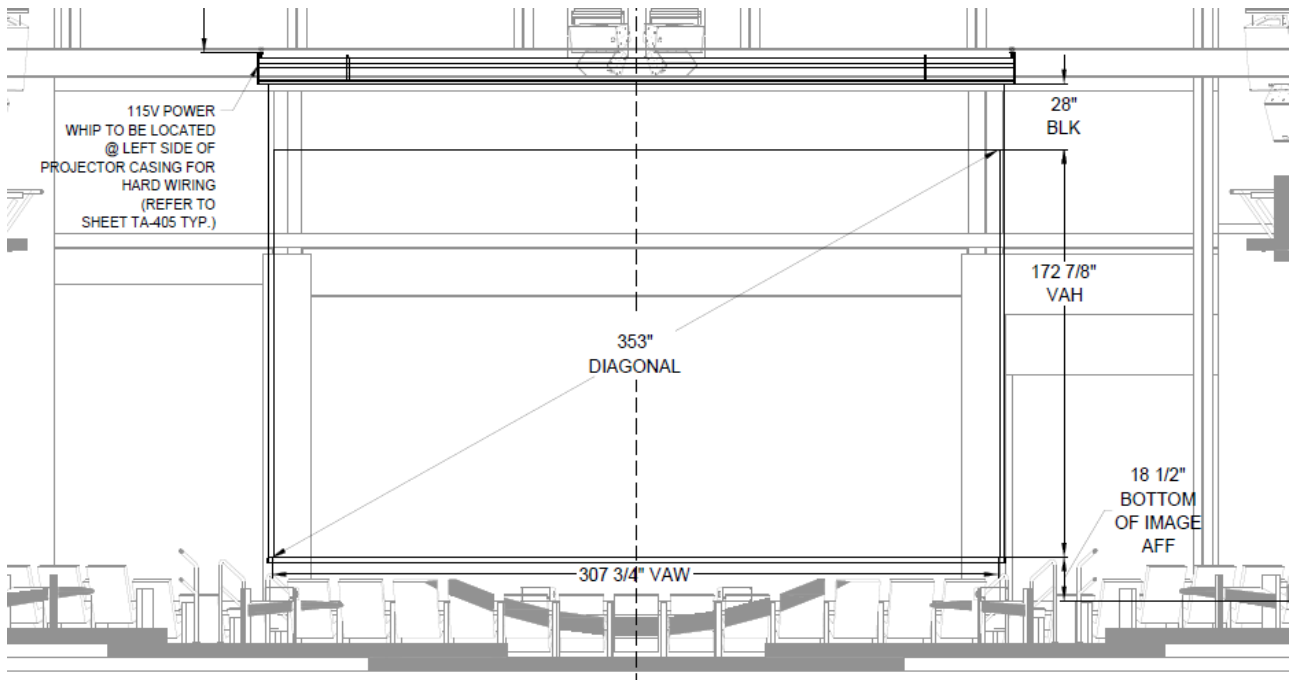
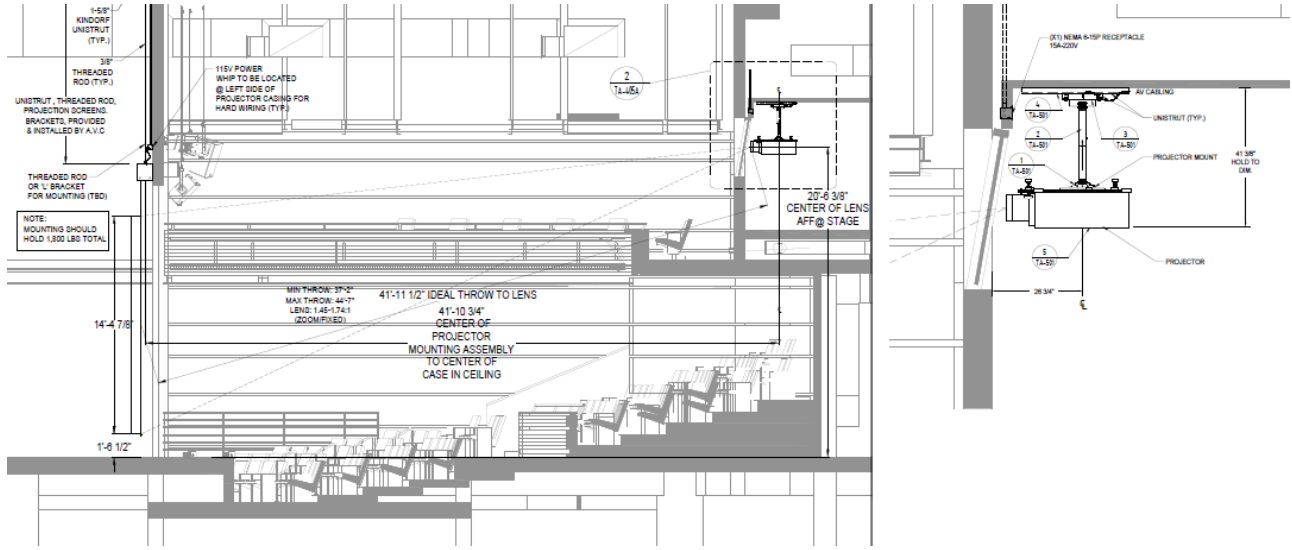
Front/Rear Table
Front/Rear Ceiling
Adjustable Front/Rear Feet

Orientation

Table Top or Inverted: Yes
Pointing Up: Yes
Pointing Down: Yes
Roll (Portrait): Yes

Projector mounted in Stage Manger Booth

Focused to 353" front projecton screen hung on Lineset#3



Backstage Information AL:

BOH Video Displays

Samsung, DC32E, 32" diagonal, landscape orientation w/ Blackmagic Designs Micro Converter SDI to HDMI, for interfacing video camera output to displays for video monitoring

Loading Dock Information AL:

In addition to the 6'-0" clear width corridor connecting the Playhouse to the loading dock, there is a single bay at-grade dock with WB-40 access available. Access to the Playhouse stage is via an 8'-0" x 8'-0" overhead coiling door

Dressing Rooms:

Lower Level

Chorus Rooms: Two (2), (14 persons each) provided with makeup counters, lighted mirrors, two sinks, and adjacent toilet rooms with showers

First Floor

Chorus Rooms: Two (2), (6 persons each) provided with makeup counters, lighted mirrors, sink, and adjacent toilet rooms

Star dressing Rooms: Two (2), (6 / 7 person) with makeup counters, lighted mirrors, sink, and attached toilet room with shower

Second Floor

Chorus Rooms: Two (2), (5 persons) provided with makeup counters, lighted mirrors, sink, and adjacent toilet rooms

Green Rooms:

Located on First Floor Level

Two (2), with Upholstered furniture, refrigerator, carpeting

Wardrobe Facility:

Located on lower level

3 washing machines, 3 dryers, and service sink / counter

Rehearsal Rooms:

Located on second floor level

(Hall 1) 28'-0" x 62'-7"

Sensor3 Power Control system

24 Dimmers @ 2.4kW Thru-Power Modules, 6 @ 20A 120V controlled breakers

Pipe Grid

AV Equipment Hall #1:

Item #	Description	Manufacture	Quantity
1	K12.2, 12" Powered Loudspeaker w/mounting yolks and Lock Out Covers	QSC	4
2	MultiMix 10, Rackmounted audio mixer with Bluetooth	Alesis	1
3	DriveRack VENU360, Loudspeaker Management System	DBX	1
4	ULXD4, 2-channel digital wireless microphone receiver	Shure	1
5	ULXD1, Bodypack wireless microphone transmitter	Shure	2
6	E6 Omni, Earloop Miniature Microphone, Beige	Countryman	2
7	ULXD2 / B87A, Handheld wireless microphone transmitter	Shure	2
8	Universal Bulkhead, Custom rack mounted AV input/output, tie-line panel	AVP	1
9	DWR-16-22, Swing Wall Equipment Rack	Middle Atlantic	1
10	UD3, 3U Locking Rack Drawer	Middle Atlantic	1
11	SSL, Sliding shelf	Middle Atlantic	2

(Hall 2) 26'-0"x50'-0"

24 Dimmers @ 2.4kW Thru-Power Modules, 6 @ 20A 120V controlled breakers

Pipe Grid

AV Equipment Hall #2:

Item #	Description	Manufacture	Quantity
1	K12.2, 12" Powered Loudspeaker w/mounting yolks and Lock Out Covers	QSC	4
2	MultiMix 10, Rackmounted audio mixer with Bluetooth	Alesis	1
3	DriveRack VENU360, Loudspeaker Management System	DBX	1
4	ULXD4, 2-channel digital wireless microphone receiver	Shure	1
5	ULXD1, Bodypack wireless microphone transmitter	Shure	2
6	E6 Omni, Earloop Miniature Microphone, Beige	Countryman	2
7	ULXD2 / B87A, Handheld wireless microphone transmitter	Shure	2
8	Universal Bulkhead, Custom rack mounted AV input/output, tie-line panel	AVP	1
9	DWR-16-22, Swing Wall Equipment Rack	Middle Atlantic	1
10	UD3, 3U Locking Rack Drawer	Middle Atlantic	1
11	SSL, Sliding shelf	Middle Atlantic	2

(Hall 3/Robert and Joan Campbell Donor Lounge) 26'-0"x50'-0"

24 Dimmers @ 2.4kW Thru-Power Modules, 6 @ 20A 120V controlled breakers

Pipe Grid

AV Equipment Hall #3:

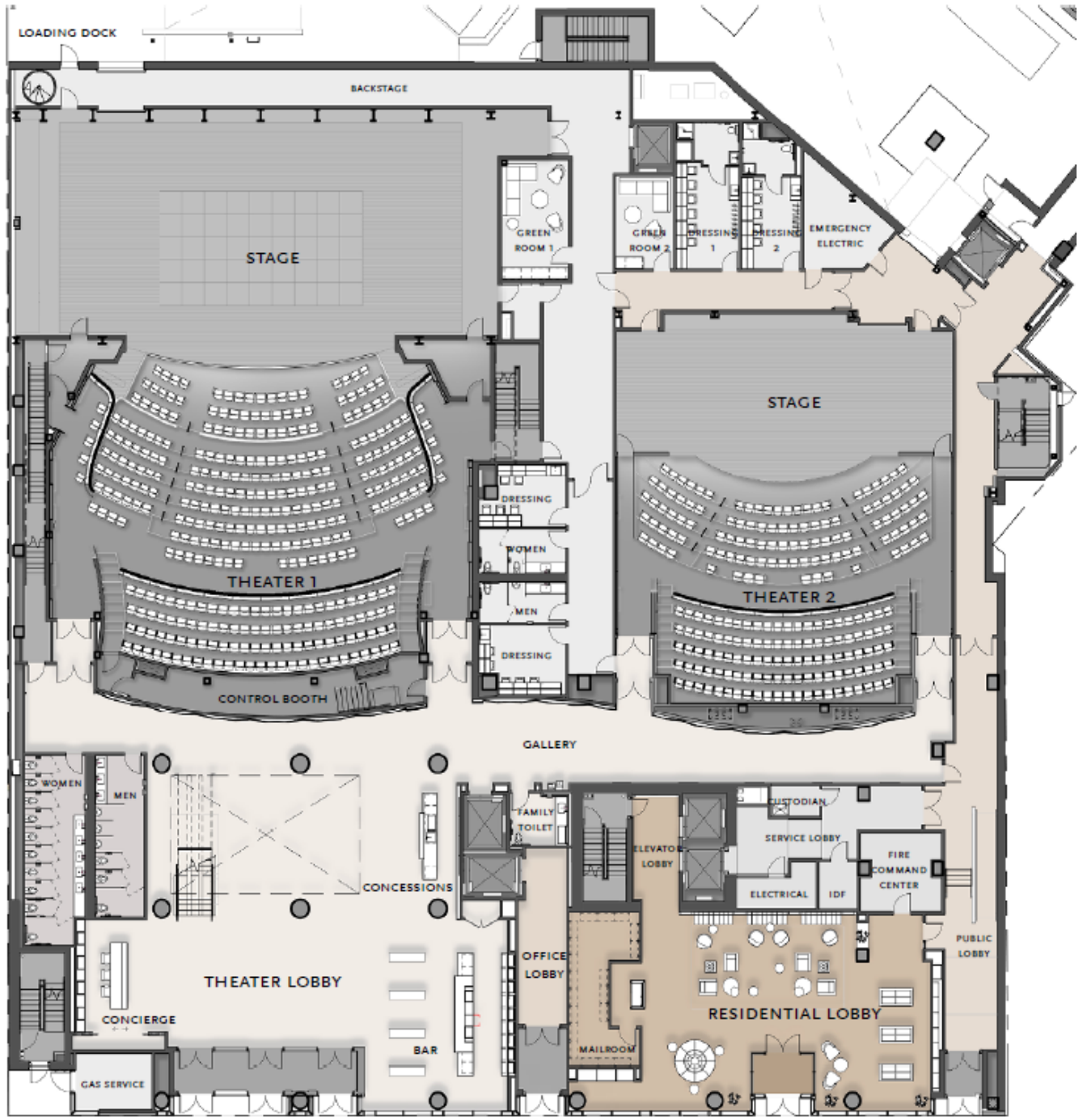
Item #	Description	Manufacture	Quantity
1	K12.2, 12" Powered Loudspeaker w/mounting yolks and Lock Out Covers	QSC	4
2	MultiMix 10, Rackmounted audio mixer with Bluetooth	Alesis	1
3	DriveRack VENU360, Loudspeaker Management System	DBX	1
4	ULXD4, 2-channel digital wireless microphone receiver	Shure	1
5	ULXD1, Bodypack wireless microphone transmitter	Shure	2
6	E6 Omni, Earloop Miniature Microphone, Beige	Countryman	2
7	ULXD2 / B87A, Handheld wireless microphone transmitter	Shure	2
8	Universal Bulkhead, Custom rack mounted AV input/output, tie-line panel	AVP	1
9	DWR-16-22, Swing Wall Equipment Rack	Middle Atlantic	1
10	UD3, 3U Locking Rack Drawer	Middle Atlantic	1
11	SSL, Sliding shelf	Middle Atlantic	2
12	UD55E-B, Video Display, 55" diagonal, landscape orientation	Samsung	1

Shared Lighting Control Console with all 3 rehearsal rooms:

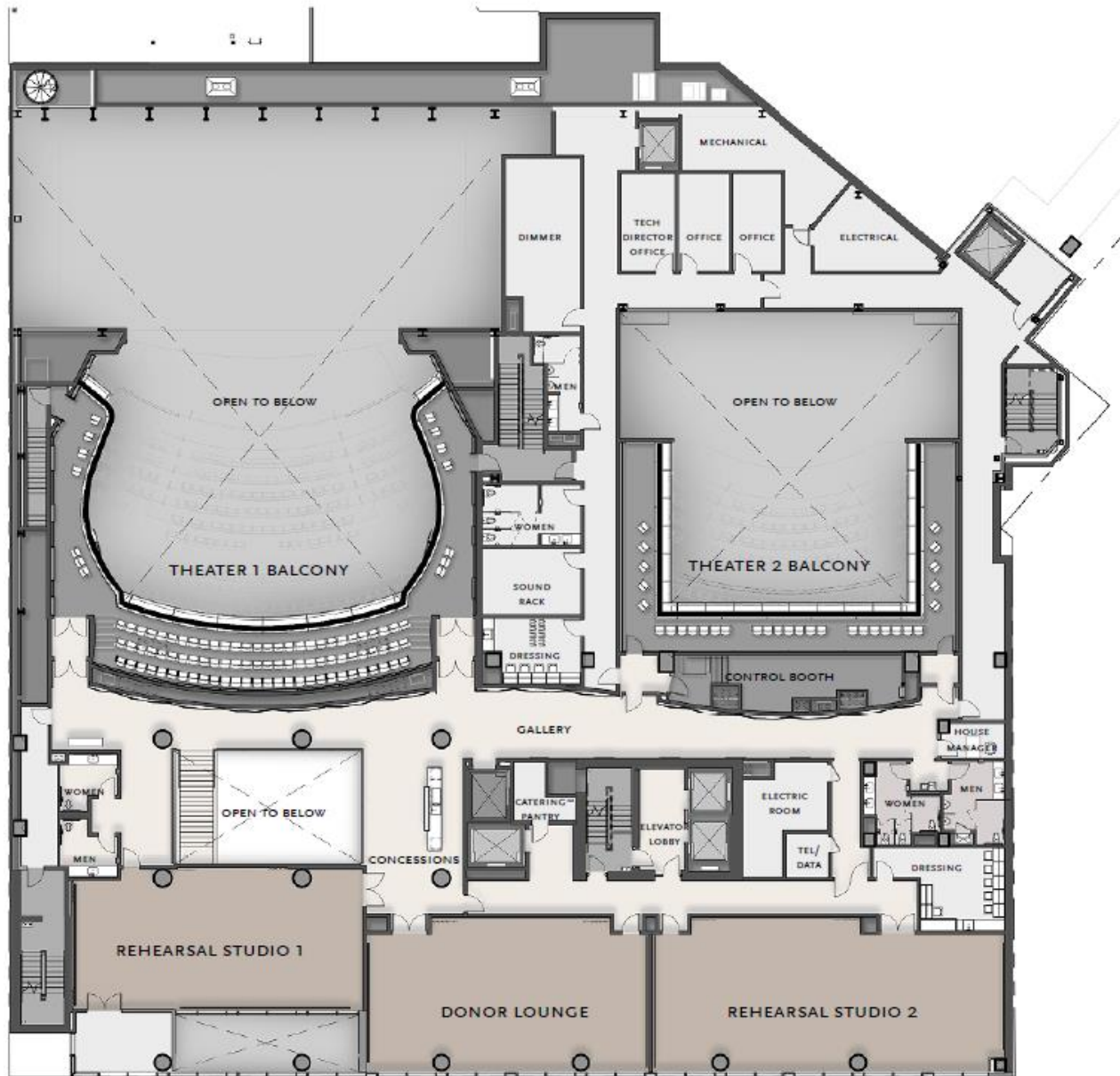
The Element 2

- 1024 or 6144 outputs
- 40 pageable faders and a Master Fader Pair
- Single cue list
- Award-winning Eos color control tools
- Support for up to two external, Windows® 7-compatible high-resolution monitors (standard, single- or multi-touch), with discrete split-screen controls, frame management and snapshots, and three user-definable workspaces per monitor
- Offline or Client programming via ETCnomad™
- Fully synchronized backup via ETCnomad, ETCnomad Puck™ or another Element or Element 2 console.
- Show file compatibility with all Eos-family products; data laundering for show files from ETC Legacy consoles and Transtechnik NT, Avab VLC, Grand MA1, Grand MA2 and Strand 500/300 series conso

Level 1 Layout



Level 2 Layout



Contact Information:

Director of Operations: Mark Sharp	msharp@nbpac.org
Production Coordinator: Christopher J. Bailey	cbailey@nbpac.org
Lighting Supervisor: Tommy Williamson	LX1@nbpac.org
Assistant Lighting Supervisor: Brian Lenahan	LX2@nbpac.org
Sound and Video Supervisor: Ted Crimy	Audio1@nbpac.org
Assistant Sound and Video Supervisor: TBD	Audio2@nbpac.org
Deck Supervisor: Andre Penn	Deck@nbpac.org
Box Office Manager: TBD	bom@nbpac.org
House Manager: TBD	housemgr@nbpac.org